

CATCHMENT E-24

Catchment Characteristics

DEP ID E-24

Size 66 acres

Impervious Cover Breakdown

Rooftop 24% (14 acres)

Parking 75% (45 acres)

Roadway 1% (0.6 acres)

Existing Stormwater Management System - Yes
 Stormwater Infrastructure Ownership – Private with minor municipal component

Opportunity Overview

Tier 1: Expand and enhance the two dry detention basins at the outlet of each stormwater drainage system to provide improved water quality treatment.

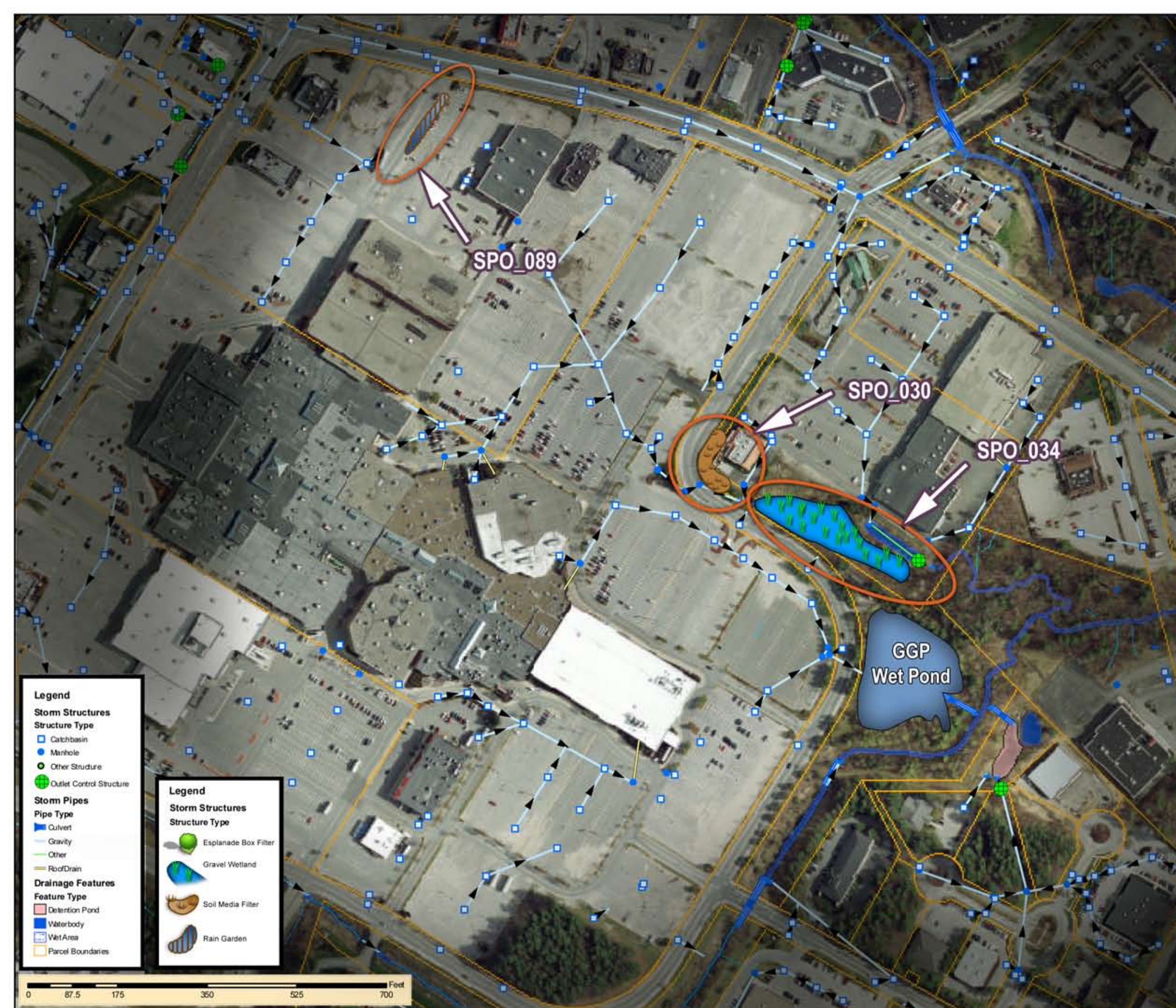
Tier 2: Locate additional water quality filters in setback portion along Philbrook Ave to manage municipal contribution in this catchment. A small demonstration raingarden could be located near north entrance to Macy's in current concrete median if soils are deemed to be appropriate.

Tier 3: Enhance drainage plan maps and provide additional retrofits as needed to maximize value of SPO_034.

Tier	Retrofit ID#	Estimated Cost
1	SPO_034, GGP Wet Pond	\$745,000
2	SPO_030 SPO_089	\$55,500
3	TBD	\$0

Considerations

Discrepancies and missing data on storm drain infrastructure maps should be rectified prior to design. SPO_034 may require expansion in order to accommodate 0.5" of rainfall runoff. Soil Filter SPO_030 may require drainage easement acquisition. GGP (General Growth Properties) Wet Pond retrofit based on previous design under GGP Stormwater Master Plan.



Legend

Storm Structures
 Structure Type
 Catchbasin
 Manhole
 Other Structure
 Outlet Control Structure

Storm Pipes
 Pipe Type
 Culvert
 Gravity
 Other
 Roof Drain

Drainage Features
 Feature Type
 Detention Pond
 Waterbody
 Wet Area
 Parcel Boundaries

Legend

Storm Structures
 Structure Type
 Esplanade Box Filter
 Gravel Wetland
 Soil Media Filter
 Rain Garden

