

STORM DRAIN PIPE SCHEDULE				
ID	SIZE	LENGTH	SLOPE	
EX SD 1	24"	25'	0.0024	
EX SD 2	24"	11'	0.0091	
EX SD 3	24"	11'	0.0000	
EX SD 4	24"	7'	0.0000	
Pipe - (110)	15"	37'	0.0016	
Pipe - (123)	15"	262'	0.0076	
SD-10	30"	460'	0.0233	
SD-17	24"	320'	0.0049	
SD-19	12"	106'	0.0030	
SD-20	12"	25'	0.0134	
SD-21	12"	11'	0.0231	
SD-22	12"	64'	0.0402	
SD-23	12"	22'	0.0046	
SD-24	12"	34'	0.0163	
SD-26	12"	57'	0.0396	
SD-27	18"	156'	0.0015	
SD-28	18"	10'	0.0100	
SD-28 A	18"	51'	0.1020	
SD-29	12"	101'	0.0030	
SD-30	12"	34'	0.1376	

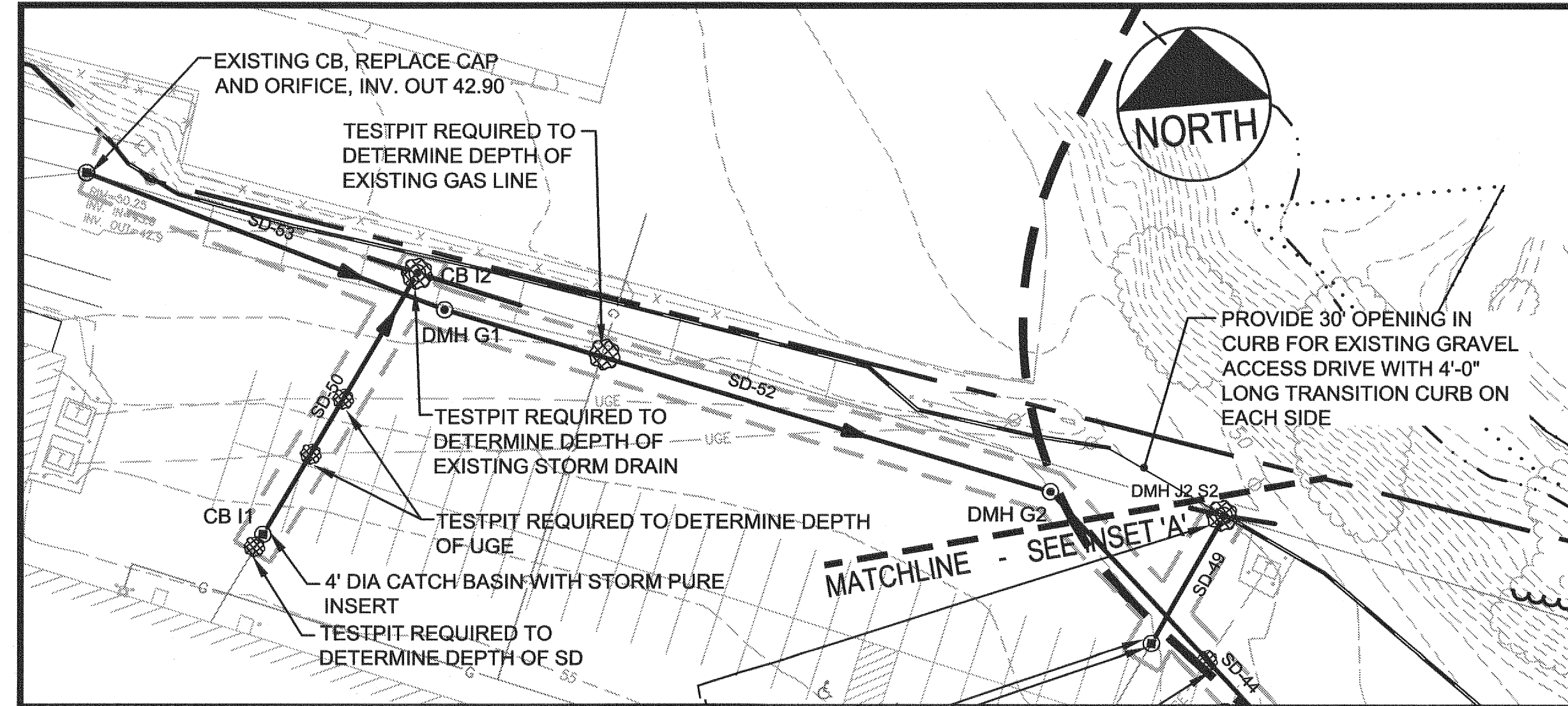
STORM DRAIN APPURTENANCE SCHEDULE				
ID	RIM	SIZE	INV. IN / SIZE / FROM	INV. OUT / SIZE / TO
4' CB J1 S2	52.00	4 ft Ø		37.51 / 12" / DMH J2 S2
CB I1	54.30	4 ft Ø		41.27 / 12" / CB I2
CB I2	51.30	4 ft Ø	41.06 / 12" / CB I1 41.06 / 24" / EX CB2	41.06 / 24" / EX CB3
CB K1	49.50	2 ft x 2 ft		44.50 / 12" / DMH G2A
CB K2	48.30	2 ft x 2 ft		43.30 / 12" / DMH G2A
CB L1	48.50	2 ft x 2 ft		43.50 / 12" / DMH L2
CB M1	51.25	4 ft Ø		46.25 / 12" / DMH L2
CB N1	49.50	4 ft Ø		46.53 / 12" / DMH N2
CB N3	49.50	4 ft Ø		44.50 / 18" / DMH N2
DMH G1	52.30	4 ft Ø	42.77 / 24" / EX CB	42.67 / 24" / DMH G2
DMH G2	52.00	4 ft Ø	42.44 / 24" / DMH G1	42.34 / 24" / DMH G2A
DMH G2A	49.79	4 ft Ø	42.15 / 24" / DMH G2 42.15 / 12" / CB K2 42.15 / 12" / CB K1	40.15 / 24" / DMH G3 S4
DMH G3 S4	49.48	6 ft Ø	40.13 / 24" / DMH G2A	42.13 / 24" / DMH G4
DMH G4	49.30	18 in Ø	42.12 / 24" / DMH G3 S4	42.02 / 18" / OUTFALL 1 42.02 / 18" / OUTFALL 2
DMH J2 S2	50.90	4 ft Ø	37.41 / 12" / 4' CB J1 S2 36.31 / 24" / EX CB5 36.41 / 24" / EX CB4	
DMH L2	51.10	6 ft Ø	43.20 / 12" / CB L1 43.20 / 12" / CB M1	43.20 / 12" / OUTFALL 8
DMH N2	50.30	4 ft Ø	44.27 / 12" / CB N1 44.27 / 18" / CB N3	42.27 / 18" / DMH O1 S5
DMH O1 S5	49.82	8 ft Ø	42.17 / 18" / DMH N2	43.67 / 18" / OUTFALL 9
DMH P8	50.50	4 ft Ø	44.01 / 15" / EX CB1 41.00 / 15" /	36.82 / 15" / OUTFALL 7
EX CB	51.00	4 ft Ø		42.90 / 24" / DMH G1

STORM DRAIN PIPE SCHEDULE				
ID	SIZE	LENGTH	SLOPE	
SD-31	12"	74'	0.0412	
SD-32	12"	28'	0.0031	
SD-33	12"	24'	0.0033	
SD-34	12"	39'	0.0031	
SD-35	12"	41'	0.0037	
SD-37	15"	64'	0.0102	
SD-42	12"	66'	0.0030	
SD-44	24"	125'	0.0015	
SD-44 A	24"	10'	0.0020	
SD-45	24"	6'	0.0016	
SD-46	12"	40'	0.0290	
SD-47	12"	89'	0.0264	
SD-48	18"	31'	0.1148	
SD-49	12"	32'	0.0031	
SD-50	12"	71'	0.0030	
SD-51	18"	32'	0.1103	
SD-52	24"	151'	0.0015	
SD-53	24"	90'	0.0014	

STORM DRAIN APPURTENANCE SCHEDULE				
ID	RIM	SIZE	INV. IN / SIZE / FROM	INV. OUT / SIZE / TO
EX CB1	53.12	4 ft Ø	46.96 / 12" / P5 46.96 / 4" / P7	44.07 / 15" / DMH P8
F1	51.50	18 in Ø	40.57 / 24" / DMH H7 S8 39.06 / 12" / F3	39.26 / 12" / F2 39.26 / 12" / 1/16 BEND
F2	49.20	4 ft Ø	38.94 / 12" / F1	38.84 / 12" / OUTFALL 6
F3	49.90	4 ft Ø		39.16 / 12" / F1 39.06 / 12" / OUTFALL 4
P1	52.00	12 in Ø		48.00 / 12" / P2
P2	52.00	12 in Ø	47.91 / 12" / P1	47.81 / 12" / P3
P3	52.00	12 in Ø	47.73 / 12" / P2	47.63 / 12" / P4
P4	52.00	12 in Ø	47.51 / 12" / P3	47.41 / 12" / P5
P5	52.00	12 in Ø	47.26 / 12" / P4	47.16 / 12" / EX CB1
P6	51.73	12 in Ø		47.35 / 4" / TEE 2
P7	51.76	12 in Ø		46.98 / 4" / EX CB1

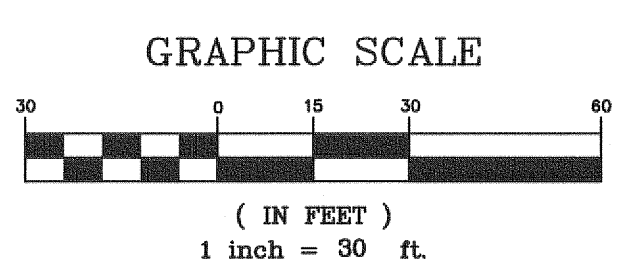
STORMWATER QUALITY FILTERS - SUBCATCHMENT AREA 1 - 6

SCALE: 1"=30'

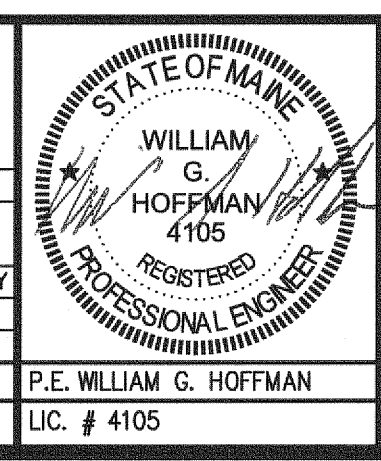


INSET 'A'
SCALE: 1"=30'

STRUCTURE SCHEDULE NOTES:
S2 - CATCH BASIN INSERT
S4 - 6' Ø DOWNSTREAM DEFENDER
S5 - 8' Ø DOWNSTREAM DEFENDER



REV	DATE	DESCRIPTION	REVISIONS
5	12.13.09	RELEASED FOR BID	
4	12.11.09	ADDED CLARIFICATION TO NOTES FOR WORK BY OTHERS, MINOR SCHEDULE REVISION	
3	12.01.09	REV. PER CITY COMMENTS DATED 11.24.09, RESUBMITTED TO CITY	
2	11.25.09	REVISED PER INTERNAL REVIEW	
1	11.12.09	SUBMITTED TO CITY FOR SITE PLAN REVIEW	



OWNERS
GMG FAMILY LIMITED PARTNERSHIP
220 MAINE MALL ROAD
SOUTH PORTLAND, MAINE 04106

ADAH P. GINN
220 MAINE MALL ROAD
SOUTH PORTLAND, MAINE 04106

GINN REAL ESTATE, LLC
220 MAINE MALL ROAD
SOUTH PORTLAND, MAINE 04106

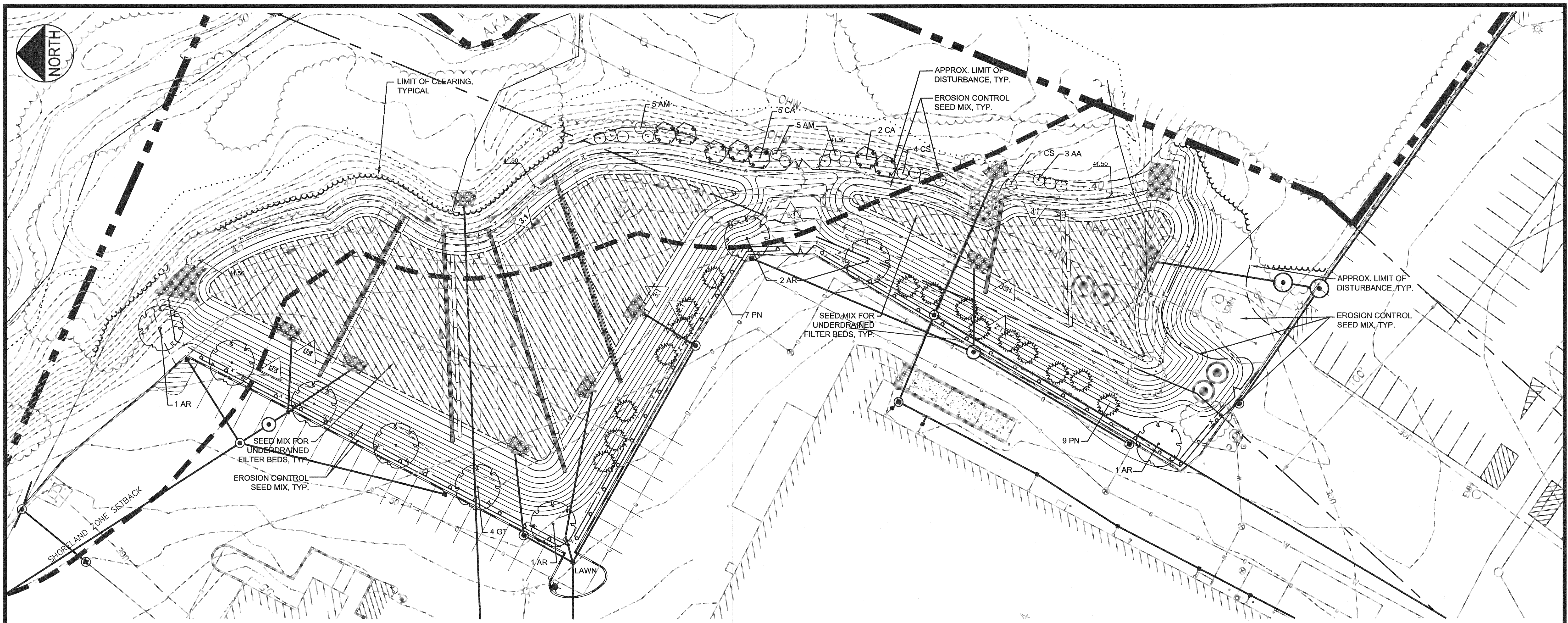
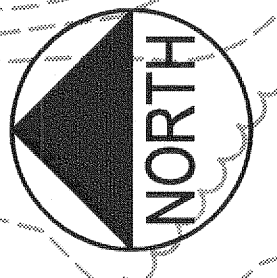
PROJECT LONG CREEK - RESTORATION PROJECT
CATCHMENT A1-05
220 MAINE MALL ROAD
SOUTH PORTLAND, MAINE 04106

SHEET TITLE GRADING AND DRAINAGE PLAN - EAST

APPLICANT CUMBERLAND COUNTY SOIL AND WATER CONSERVATION DISTRICT
35 MAIN STREET-SUITE 3, WINDHAM, ME 04062

DeLUCA-HOFFMAN ASSOCIATES, INC.
778 MAIN STREET, SUITE 8
SOUTH PORTLAND, ME 04106
207.775.1121
WWW.DELUCAHOFFMAN.COM

DRAWN: LA **DATE:** NOV 2009
DESIGNED: RJW **SCALE:** 1"=30'
CHECKED: WGH **JOB NO.:** 2889-01
FILE NAME: 2889-01 SP EAST
SHEET 3.1

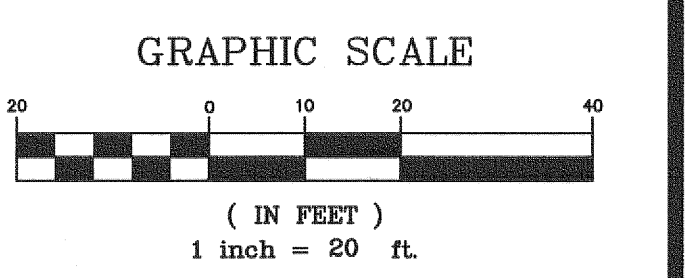


**LANDSCAPE PLAN FOR
STORMWATER QUALITY FILTERS - SUBCATCHMENT AREA 1 - 6**

SCALE: 1"=20'

SEE DETAIL SHEET 4.3 FOR
INSTALLATION DETAILS,
NOTES & SEEDING PLANS

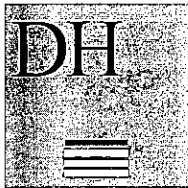
PLANT LIST						
KEY	QTY	BOTANICAL NAME COMMON NAME	SIZE	ROOT	SPACING	REMARKS
TREES						
AR	7	Acer rubrum 'Red Sunset' Red Sunset Red Maple	2.5-3" cal.	B&B		
GT	4	Gleditsia triacanthos inermis Thornless Honeylocust	2.5-3" cal.	B&B		
PN	21	Pinus nigra Austrian Pine	5-6' ht.	B&B		
SHRUBS, GRASSES & VINES						
AA	3	Amelanchier arbutifolia Red Chokeberry	24-30" ht.	3-5 gal.	5' o.c.	
AM	13	Aronia melanocarpa Black Chokeberry	24-30" ht.	3-5 gal.	5' o.c.	
CA	7	Cornus alternifolia Pagoda Dogwood	3-4' ht.	Cont./B&B		
CS	5	Cornus sericea Red Twig Dogwood	24-30" ht.	3-5 gal.	5' o.c.	
JC	3	Juniperus chinensis 'Hetzii Glauca' Blue Hetzii Juniper	18-24" spr.	Cont./B&B	5' o.c.	
JS	13	Juniperus chinensis 'Sargentii' Sargent's Juniper	18-24" spr.	Cont./B&B	4' o.c.	
PV	15	Panicum virgatum 'Dallas Blues' Dallas Blues Switchgrass	full	3 gal.	4' o.c.	
VM	5	Viburnum x burkwoodii 'Mohawk' Mohawk Viburnum	24-30" ht.	cont./B&B	5' o.c.	
HERBACEOUS (WATER QUALITY CHAMBERS)						
JE	120	Juncus effusus Softrush	4" pot or bare root			no mulch
SA	120	Scirpus atrovirens Bullrush	4" pot or bare root			no mulch
MISCELLANEOUS						
Mulch		Shredded Hardwood	3" depth			incl. tree rings
Grass Seed		See Seeding Plans				



PRELIMINARY - NOT FOR CONSTRUCTION

4 12.13.09 RELEASED FOR BIDS 3 12.08.09 REVISED PER CMP COMMENTS 2 12.01.09 REV. PER CITY COMMENTS DATED 11.24.09, RESUBMITTED TO CITY 1 11.12.09 SUBMITTED TO CITY FOR SITE PLAN REVIEW REV DATE DESCRIPTION REVISIONS		OWNERS GMG FAMILY LIMITED PARTNERSHIP 220 MAINE MALL ROAD SOUTH PORTLAND, MAINE 04106	PROJECT LONG CREEK - RESTORATION PROJECT CATCHMENT A1-05 220 MAINE MALL ROAD SOUTH PORTLAND, MAINE 04106	DeLUCA-HOFFMAN ASSOCIATES, INC. 778 MAIN STREET, SUITE 8 SOUTH PORTLAND, ME 04106 207.775.1121 WWW.DELUCAHOFFMAN.COM
		ADAP P. GINN 220 MAINE MALL ROAD SOUTH PORTLAND, MAINE 04106	LANDSCAPING PLAN - EAST	DRAWN: SEB DATE: NOV 2009 DESIGNED: SEB SCALE: 1" = 20' CHECKED: WGH JOB NO. 2889.01 FILE NAME: 2889-01-LANDSCAPE EAST SHEET 4.1
GINN REAL ESTATE, LLC 220 MAINE MALL ROAD SOUTH PORTLAND, MAINE 04106		APPLICANT CUMBERLAND COUNTY SOIL AND WATER CONSERVATION DISTRICT 35 MAIN STREET-SUITE 3, WINDHAM, ME 04062		

G:\2889_01\dwg\CONTRACT\2889-01 LANDSCAPE EAST.dwg, LANDSCAPE EAST, 12/15/2009 10:48:11 AM, D.Davis



DeLUCA-HOFFMAN ASSOCIATES, INC.
CONSULTING ENGINEERS

778 MAIN STREET
SUITE 8
SOUTH PORTLAND, MAINE 04106
TEL. 207 775 1121
FAX 207 879 0896

- SITE PLANNING AND DESIGN
- ROADWAY DESIGN
- ENVIRONMENTAL ENGINEERING
- PERMITTING
- AIRPORT ENGINEERING
- CONSTRUCTION ADMINISTRATION

November 20, 2009

Mr. Steve Puleo
Planning Department
City of South Portland
P.O. Box 9422
South Portland, Maine 04106

**Subject: Long Creek Restoration Project
Catchment A1-05
Supplemental Drawings**

Dear Steve:

Our office has developed several additional drawings for the subject project. These are not new information but cross sections and similar information that should allow the technical review to be conducted easier. We are sending you three folded sets of this information as well as sending two copies to Dan Riley at Sebago Technics.

The new drawings are as follows:

Drawing #	Description
9.1	Pretreatment Unit Details
10.0	Water Quality Filter Sections
10.1	Subsurface Storage Sections
11.0	Retaining Wall Profile for StormTreat Area

We understand Dan Riley has sent in his review comments. If you can forward us the comments we will address them by November 30 and would like to set up a meeting during the week after Thanksgiving to review the project and our responses to the peer reviews.

If you have any questions with regards to this letter, please contact our office.

Sincerely,

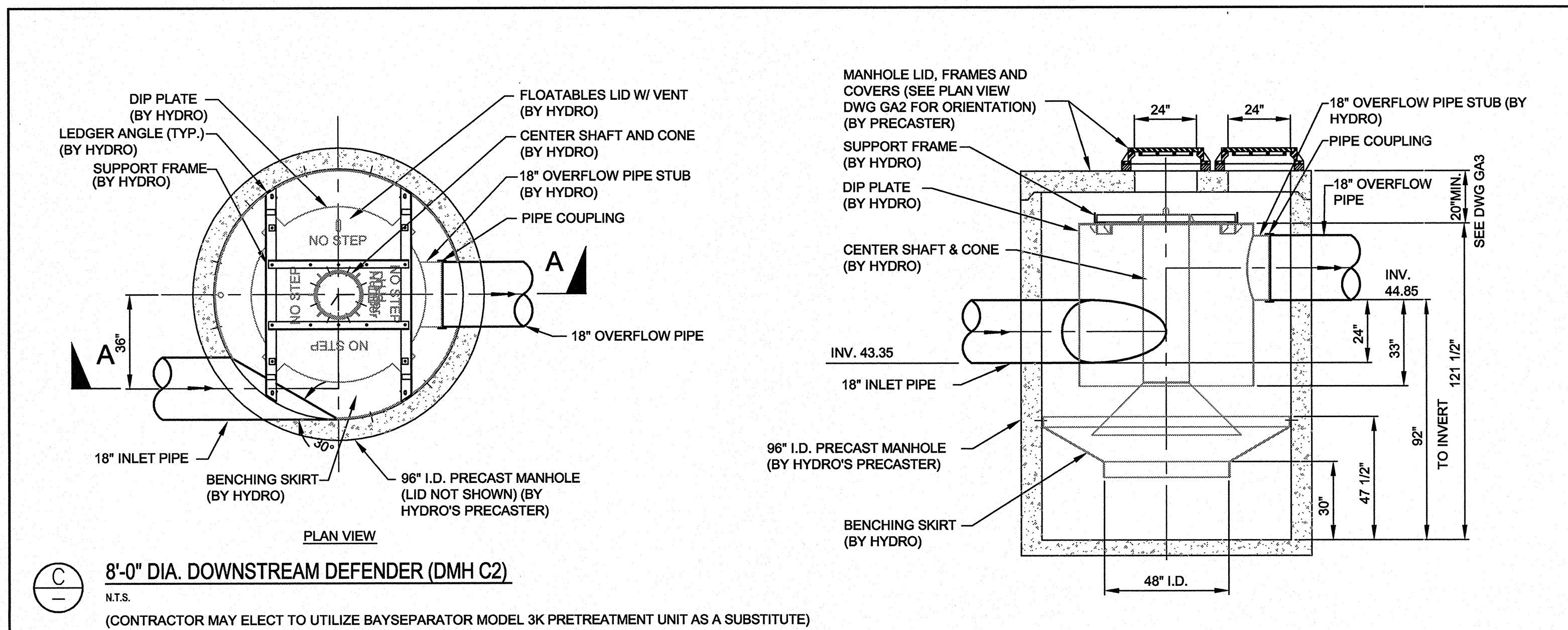
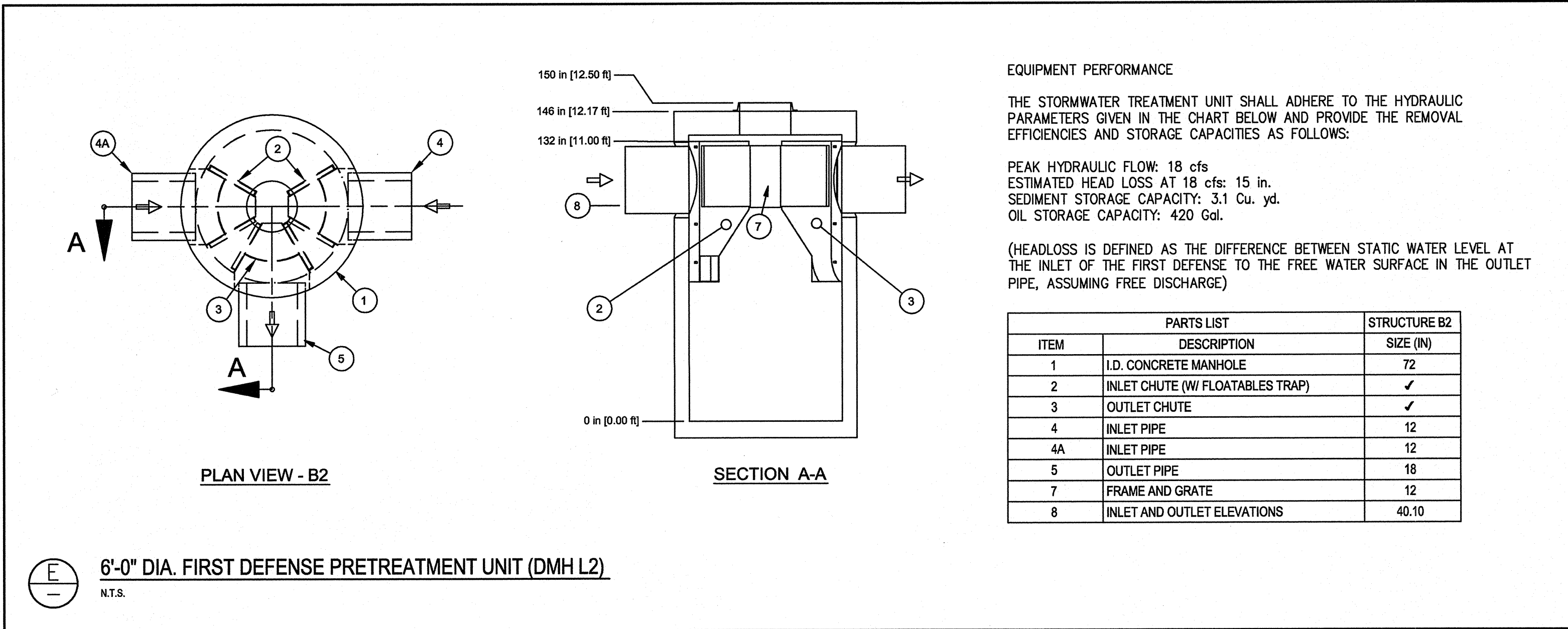
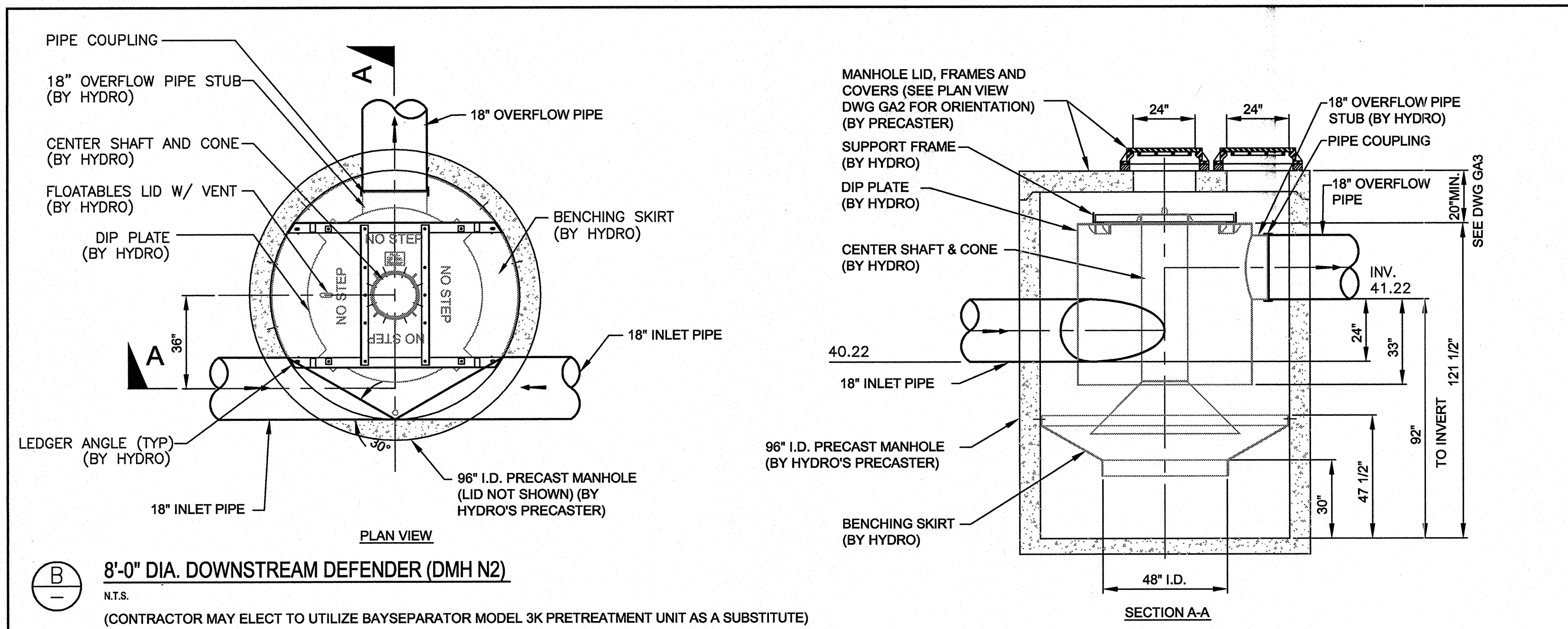
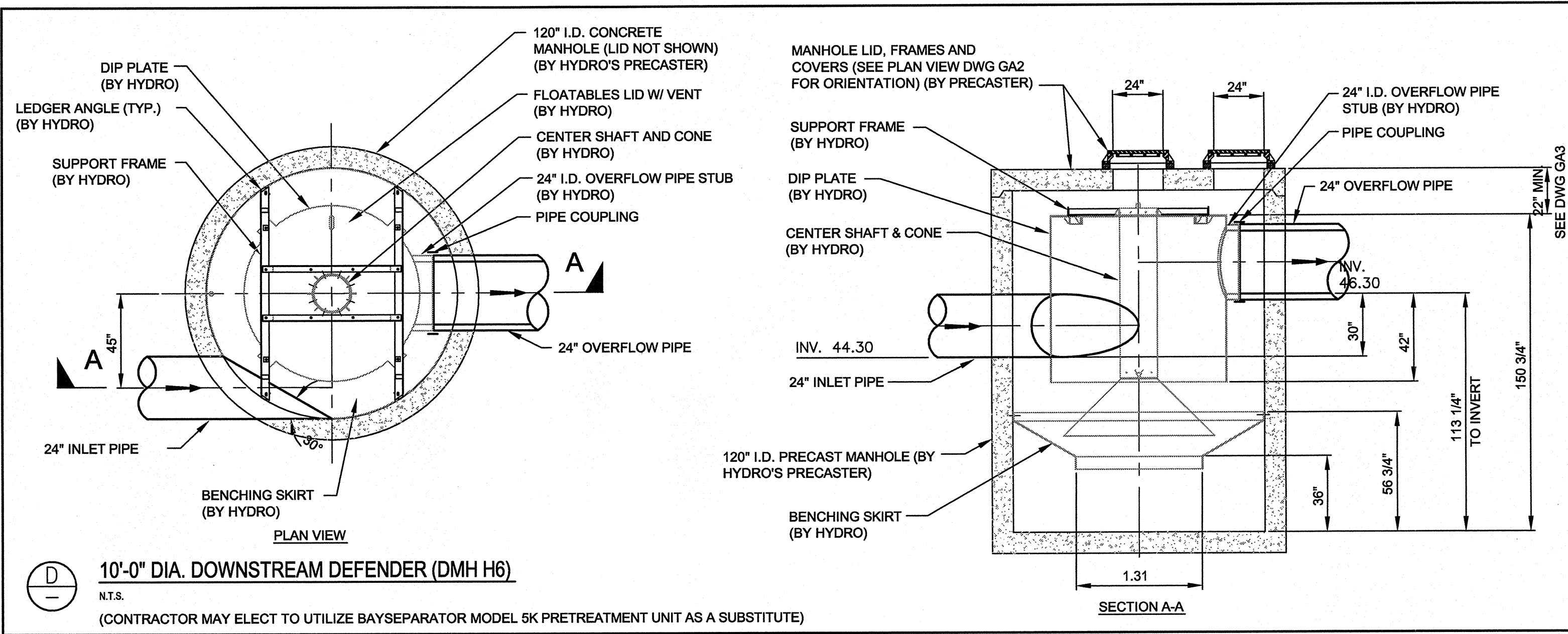
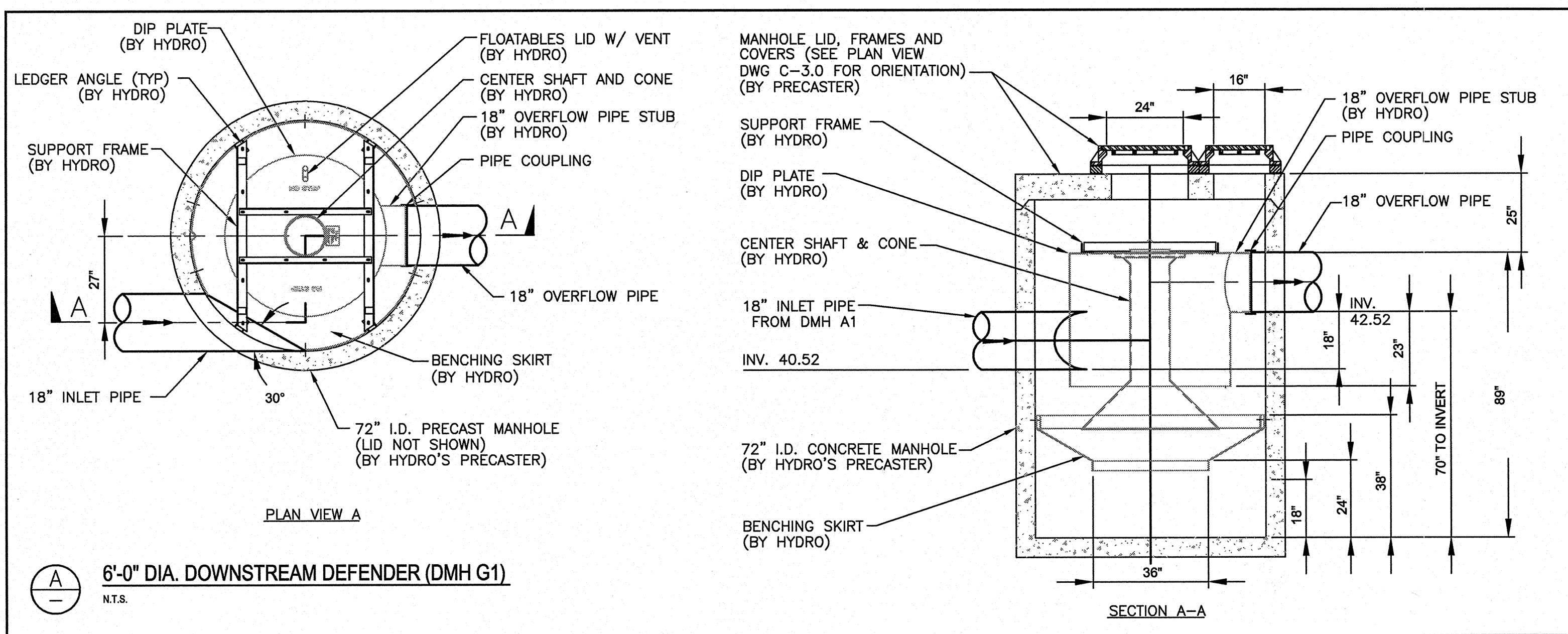
DeLUCA-HOFFMAN ASSOCIATES, INC.

William G. Hoffman, P.E.
President

WGH/cmd/JN2889/Puleo11-20-09

Enclosure

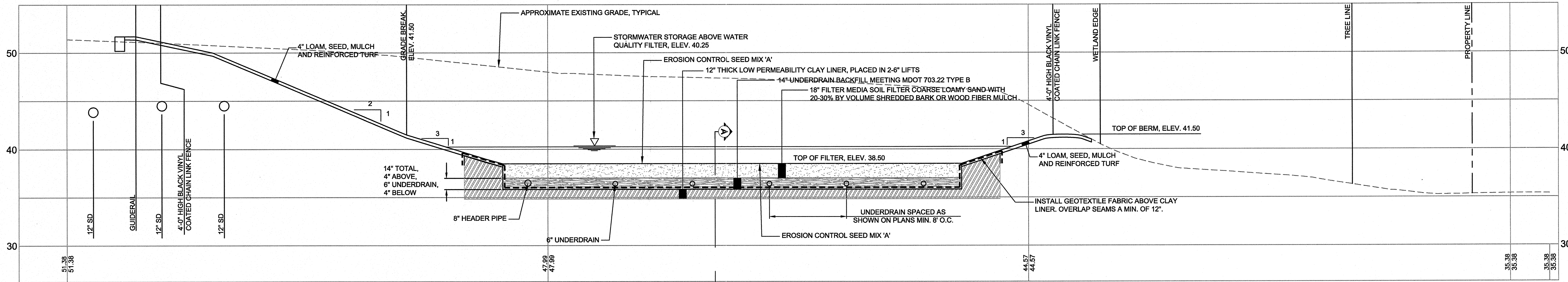
c: Dan Riley
Joe Laverriere
Tamara Lee Pinard
Chris Baldwin
Art McGlauffin
Jeff Dennis



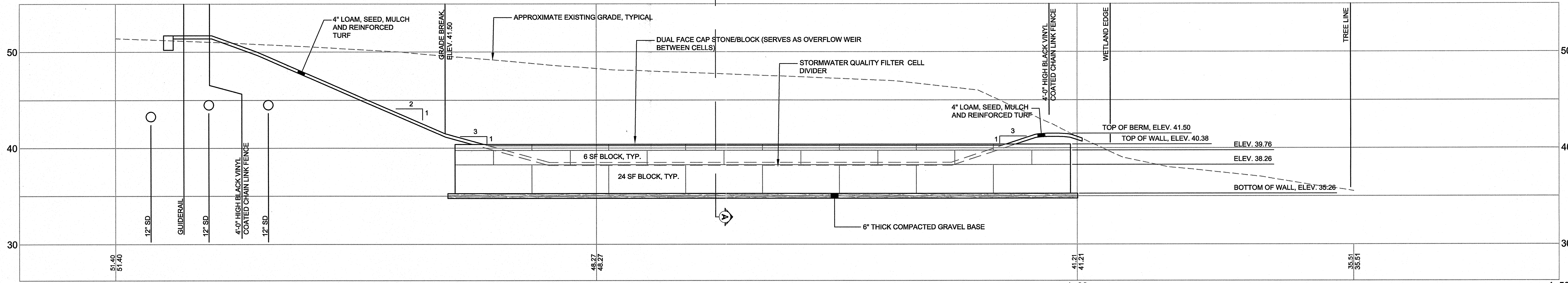
PRELIMINARY - NOT FOR CONSTRUCTION

	OWNERS GINN FAMILY LIMITED PARTNERSHIP 220 MAINE MALL ROAD SOUTH PORTLAND, MAINE 04106 ADAP P. GINN 220 MAINE MALL ROAD SOUTH PORTLAND, MAINE 04106 GINN REAL ESTATE, LLC 220 MAINE MALL ROAD SOUTH PORTLAND, MAINE 04106	PROJECT LONG CREEK - RESTORATION PROJECT CATCHMENT A1-05 220 MAINE MALL ROAD SOUTH PORTLAND, MAINE 04106 SHEET TITLE PRETREATMENT UNIT DETAILS	DeLUCA-HOFFMAN ASSOCIATES, INC. 778 MAIN STREET, SUITE 8 SOUTH PORTLAND, ME 04106 207.775.1121 WWW.DELUCAHOFFMAN.COM
	REV 1 11.20.09 ADDITIONAL INFORMATION SENT FOR SITE PLAN REVIEW P.E. WILLIAM G. HOFFMAN LIC. # 4105	APPLICANT CUMBERLAND COUNTY SOIL AND WATER CONSERVATION DISTRICT 35 MAIN STREET-SUITE 3, WINDHAM, ME 04062	DRAWN: LA DATE: NOV 2009 DESIGNED: RJW SCALE: N.T.S. CHECKED: WGH JOB NO. 2889.01 FILE NAME: 2889-01-DET SHEET 9.1

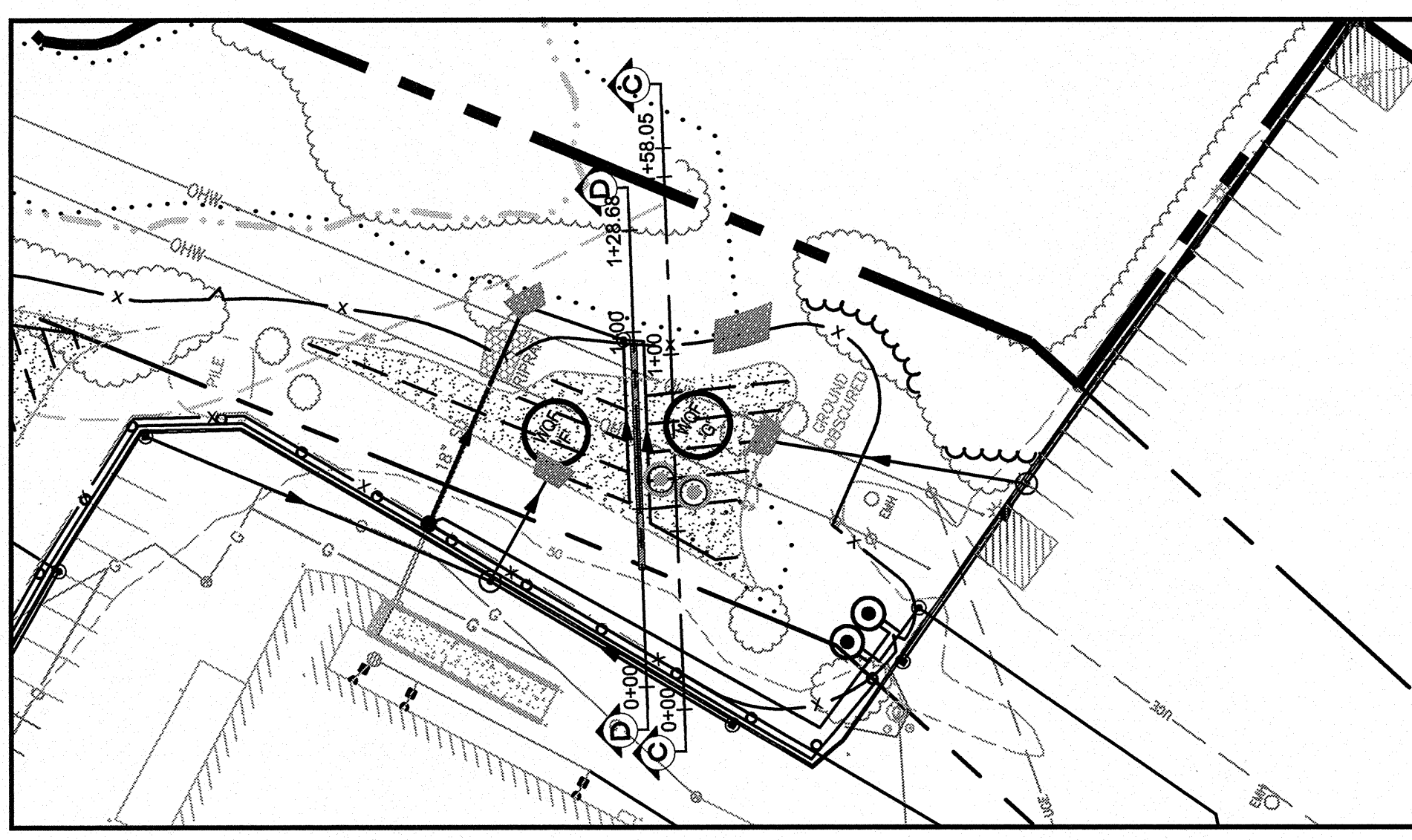
G:\2889.01\dwg\PERMIT\2889-01-DET-PRETREAT.dwg, DET 9.1, 11/20/2009 4:57:24 PM



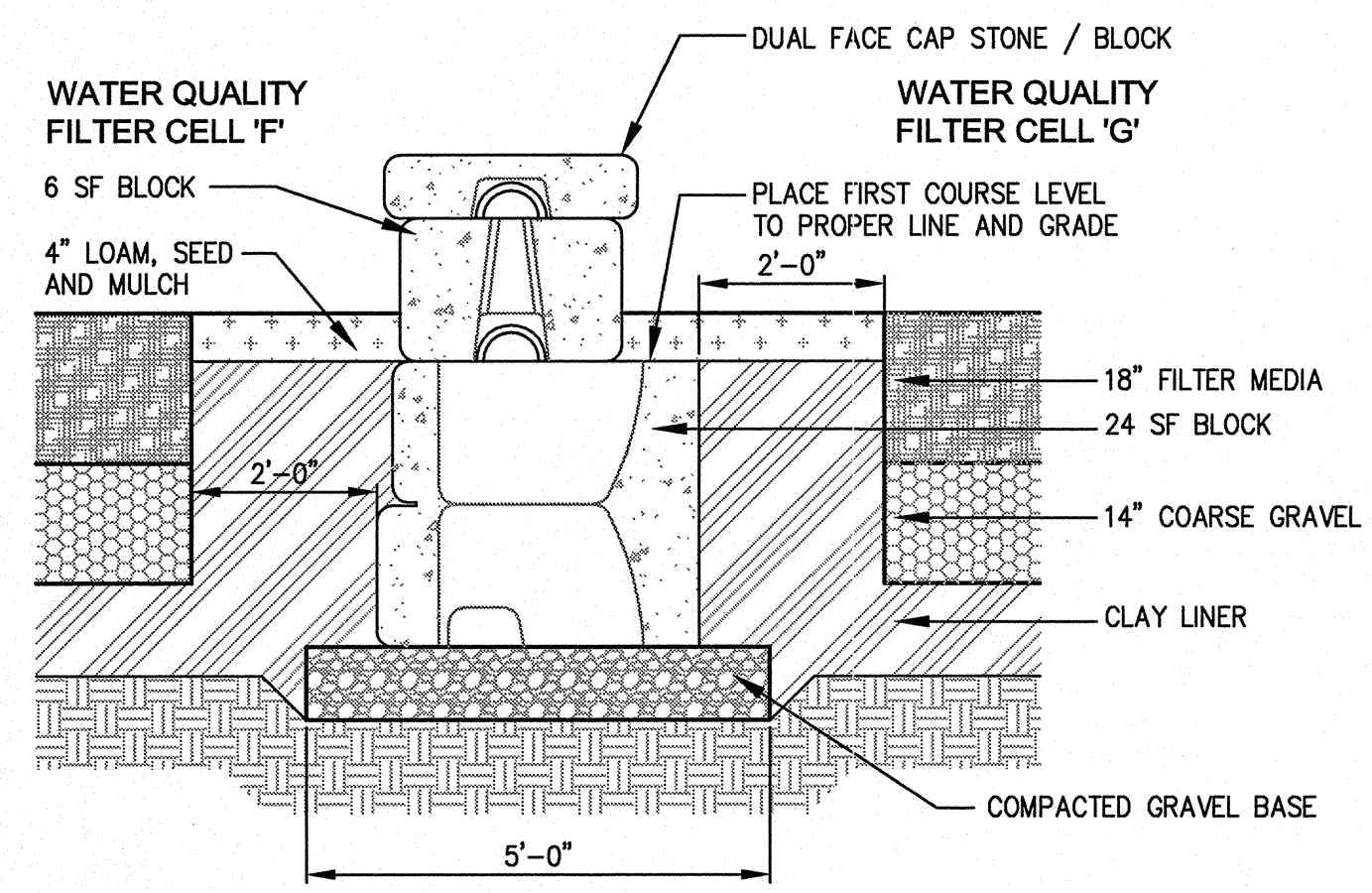
SWQ FILTER SECTION C-C
SCALE: 1"=5' VERT, 1"=5' HORI



SWQ FILTER SECTION D-D
SCALE: 1"=5' VERT, 1"=5' HORI

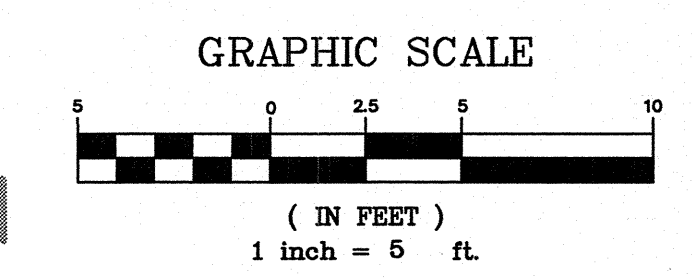


ORIENTATION SKETCH
N.T.S.



SECTION A-A
N.T.S.

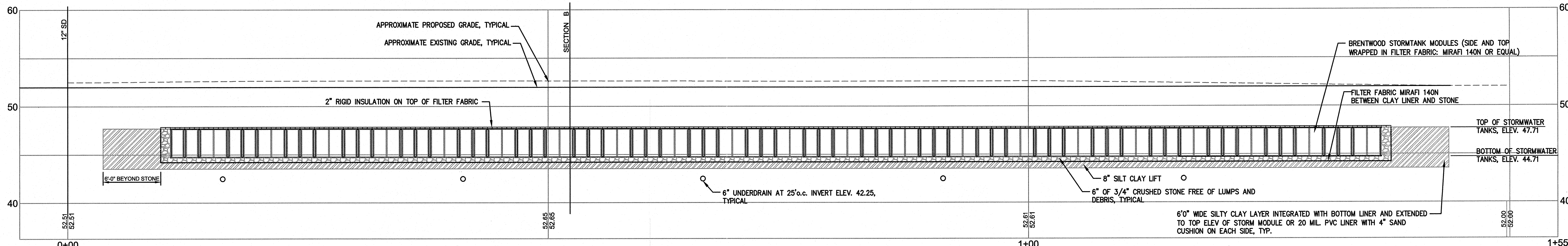
WATER QUALITY FILTER AGGREGATES TO MEET THE REQUIREMENTS OF MAINE DEPARTMENT OF ENVIRONMENTAL PROTECTION CHAPTER 500 IN EFFECT ON THE DATE OF ADVERTISEMENT FOR BID



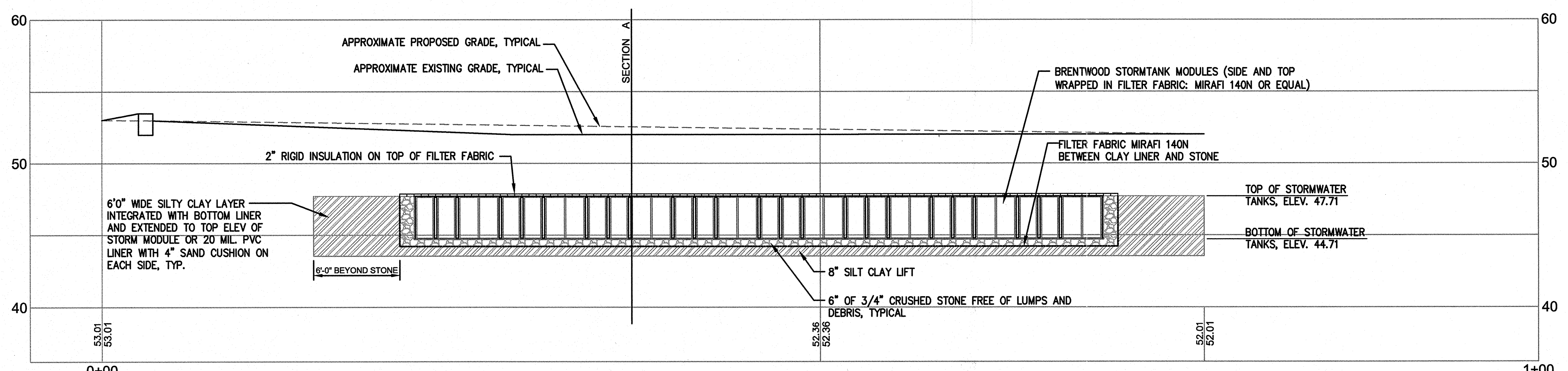
PRELIMINARY - NOT FOR CONSTRUCTION

OWNERS GMG FAMILY LIMITED PARTNERSHIP 220 MAINE MALL ROAD SOUTH PORTLAND, MAINE 04106 ADAM P. GINN 220 MAINE MALL ROAD SOUTH PORTLAND, MAINE 04106 GINN REAL ESTATE, LLC 220 MAINE MALL ROAD SOUTH PORTLAND, MAINE 04106		PROJECT LONG CREEK - RESTORATION PROJECT CATCHMENT A1-05 220 MAINE MALL ROAD SOUTH PORTLAND, MAINE 04106 SHEET TITLE STORMWATER QUALITY FILTER SECTIONS		DeLUCA-HOFFMAN ASSOCIATES, INC. 778 MAIN STREET, SUITE 8 SOUTH PORTLAND, ME 04106 207.776.1121 WWW.DELUCAHOFFMAN.COM	
DESIGNED: LA CHECKED: WGH FILE NAME: 2889-01 SWM SECTIONS		DATE: NOV 2009 SCALE: NOTED JOB NO.: 2889.01 SHEET: 10.0		APPLICANT CUMBERLAND COUNTY SOIL AND WATER CONSERVATION DISTRICT 35 MAIN STREET-SUITE 3, WINDHAM, ME 04062	
REVISIONS 1 11.20.09 ADDITIONAL INFORMATION SENT FOR SITE PLAN REVIEW		PROFESSIONAL ENGINEER WILLIAM G. HOFFMAN LIC. # 4105		STATE OF MAINE WILLIAM G. HOFFMAN REGISTERED PROFESSIONAL ENGINEER	

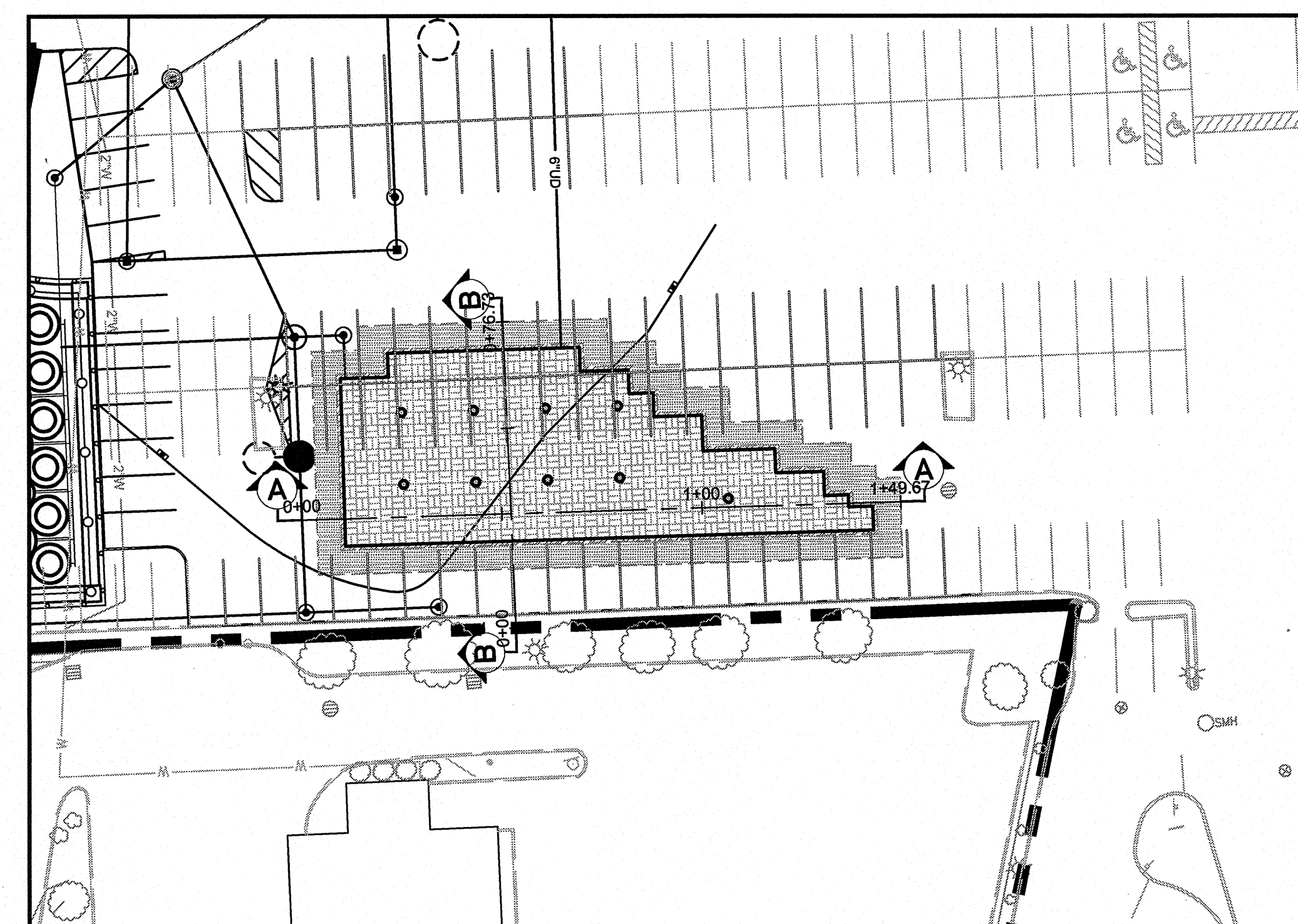
G:\2889_01\dwg\PERMIT\2889-01 SWM SECTIONS.dwg, SWQ (10.0), 11/20/2009 3:54:18 PM



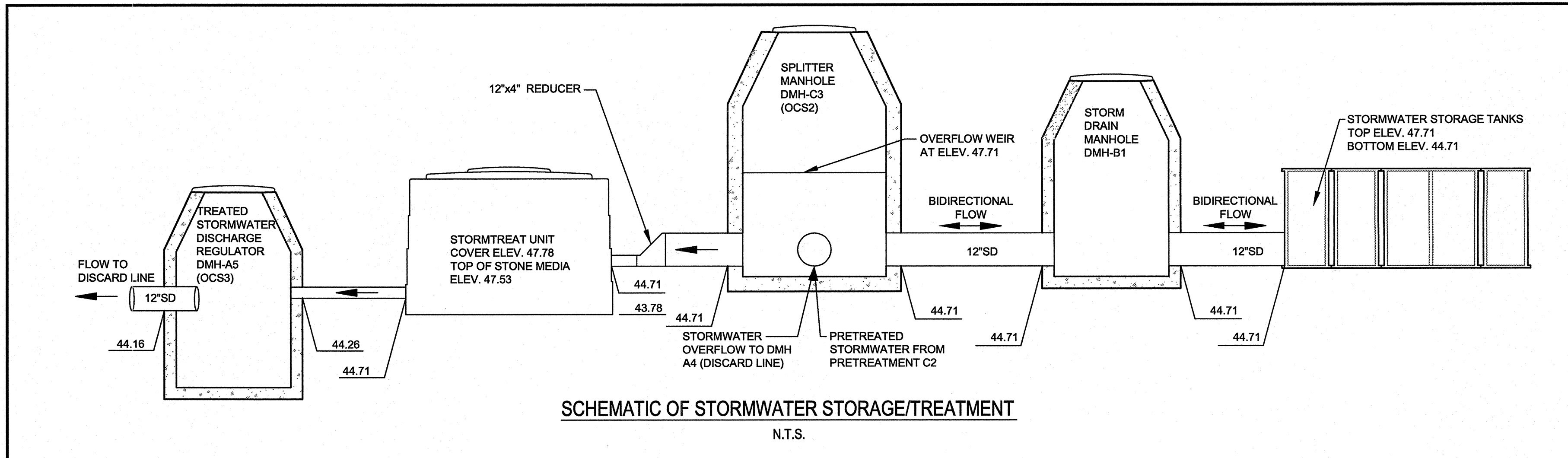
STORMWATER MANAGEMENT SECTION A-A
SCALE: 1"=4' VERT, 1"=40' HORI



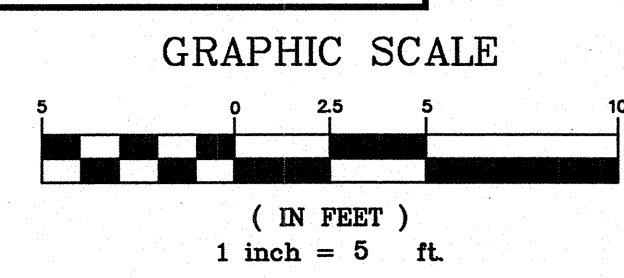
STORMWATER MANAGEMENT SECTION B-B
SCALE: 1"=4' VERT, 1"=40' HORI



SWM SECTIONS ORIENTATION PLAN
SCALE: 1" = 100'



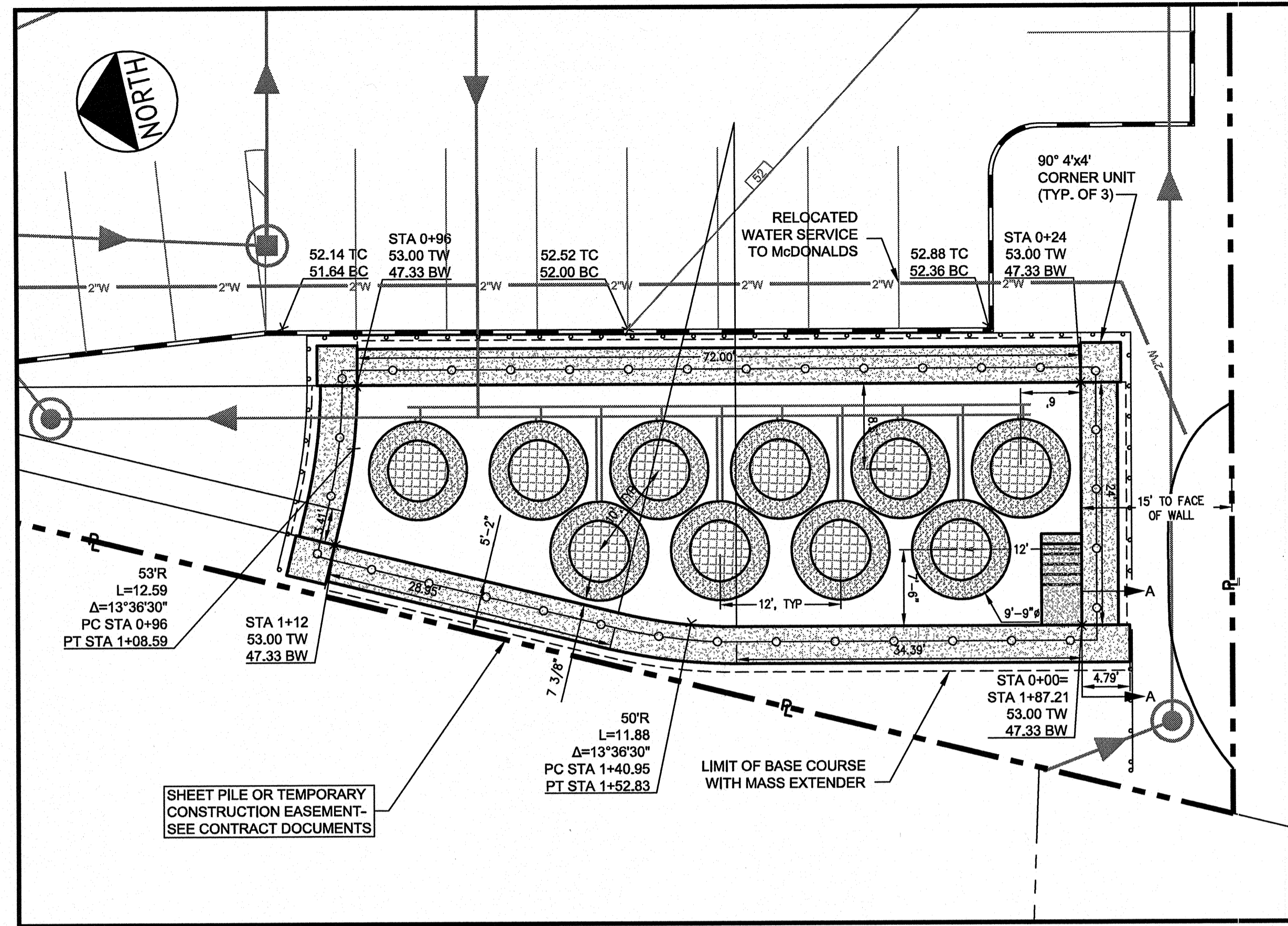
SCHEMATIC OF STORMWATER STORAGE/TREATMENT
N.T.S.



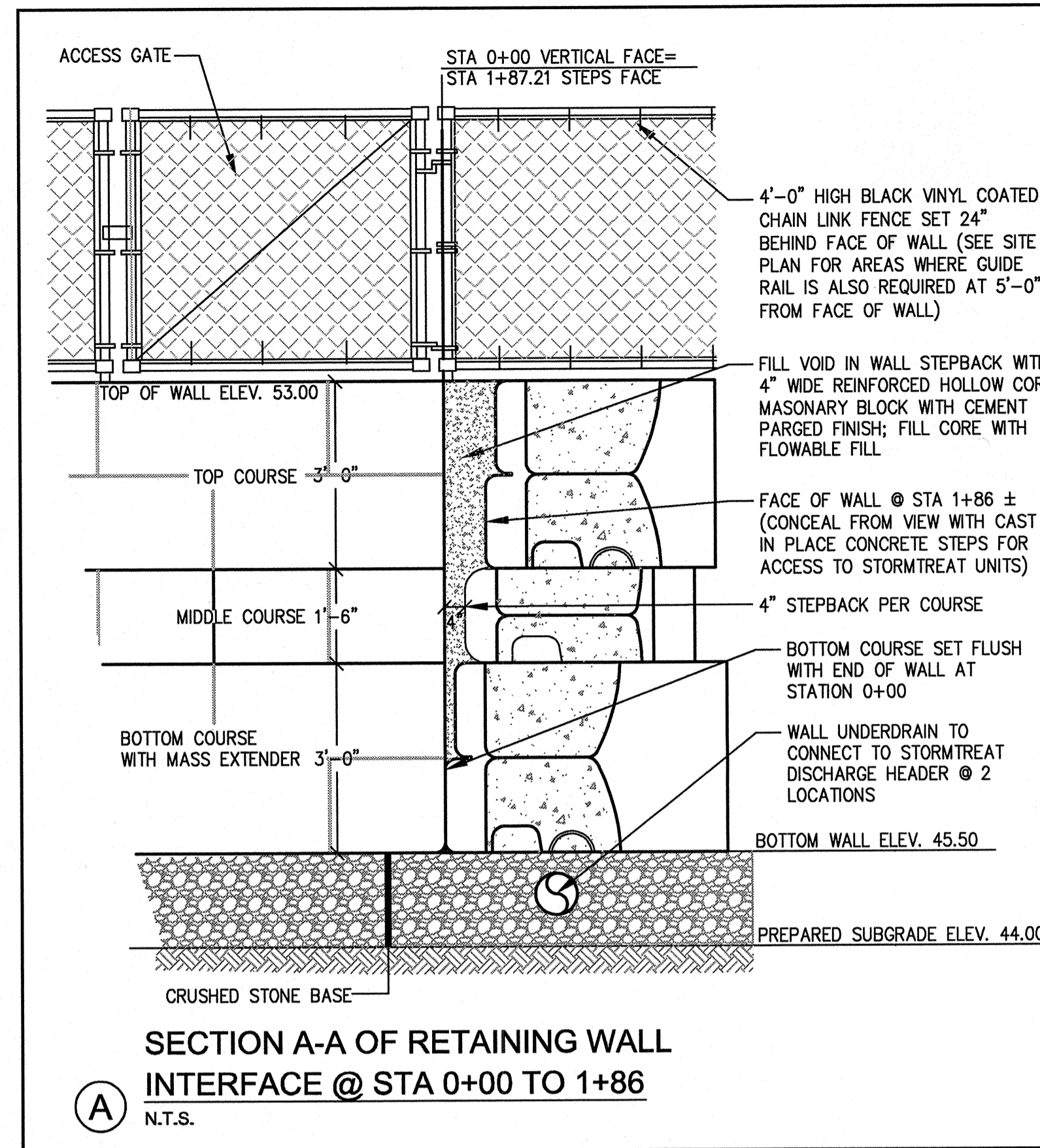
PRELIMINARY - NOT FOR CONSTRUCTION

OWNERS CMG FAMILY LIMITED PARTNERSHIP 220 MAINE MALL ROAD SOUTH PORTLAND, MAINE 04106 ADAP P. GINN 220 MAINE MALL ROAD SOUTH PORTLAND, MAINE 04106 GINN REAL ESTATE, LLC 220 MAINE MALL ROAD SOUTH PORTLAND, MAINE 04106		PROJECT LONG CREEK - RESTORATION PROJECT CATCHMENT A1-05 220 MAINE MALL ROAD SOUTH PORTLAND, MAINE 04106 SHEET TITLE SUBSURFACE STORAGE SECTIONS APPLICANT CUMBERLAND COUNTY SOIL AND WATER CONSERVATION DISTRICT 35 MAIN STREET-SUITE 3, WINDHAM, ME 04062		DeLUCA-HOFFMAN ASSOCIATES, INC. 778 MAIN STREET, SUITE 8 SOUTH PORTLAND, ME 04106 207.775.1121 WWW.DELUCAHOFFMAN.COM DRAWN: LA DATE: NOV 2009 DESIGNED: RJW SCALE: 1" = 5' CHECKED: WGH JOB NO. 2889.01 FILE NAME: 2889-01 SWM SECTIONS SHEET 10.1							
REVISIONS <table border="1"> <thead> <tr> <th>REV</th> <th>DATE</th> <th>DESCRIPTION</th> </tr> </thead> <tbody> <tr> <td>1</td> <td>11.20.09</td> <td>ADDITIONAL INFORMATION SENT FOR SITE PLAN REVIEW</td> </tr> </tbody> </table>		REV	DATE	DESCRIPTION	1	11.20.09	ADDITIONAL INFORMATION SENT FOR SITE PLAN REVIEW				
REV	DATE	DESCRIPTION									
1	11.20.09	ADDITIONAL INFORMATION SENT FOR SITE PLAN REVIEW									

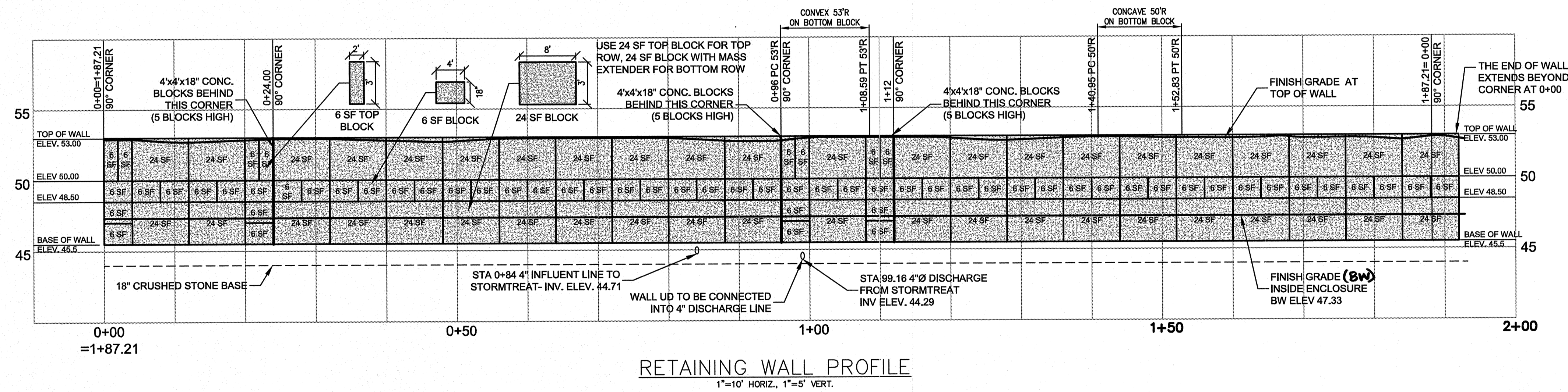
G:\2889.01\dwg\PERMIT\2889-01 SWM SECTIONS.dwg, SWM1 (10.1), 11/20/2009 3:55:00 PM



RETAINING WALL PLAN VIEW
1"=10'



SECTION A-A OF RETAINING WALL
INTERFACE @ STA 0+00 TO 1+86
N.T.S.



RETAINING WALL PROFILE
1"=10' HORIZ., 1"=5' VERT.

PRELIMINARY - NOT FOR CONSTRUCTION

REV	DATE	DESCRIPTION	PROFESSIONAL ENGINEER
1	11.20.09	ADDITIONAL INFORMATION FOR SITE PLAN REVIEW	P.E. WILLIAM G. HOFFMAN LIC. # 4105
REVISIONS			

OWNERS
GMG FAMILY LIMITED PARTNERSHIP
220 MAINE MALL ROAD
SOUTH PORTLAND, MAINE 04106

ADAH P. GINN
220 MAINE MALL ROAD
SOUTH PORTLAND, MAINE 04106

GINN REAL ESTATE, LLC
220 MAINE MALL ROAD
SOUTH PORTLAND, MAINE 04106

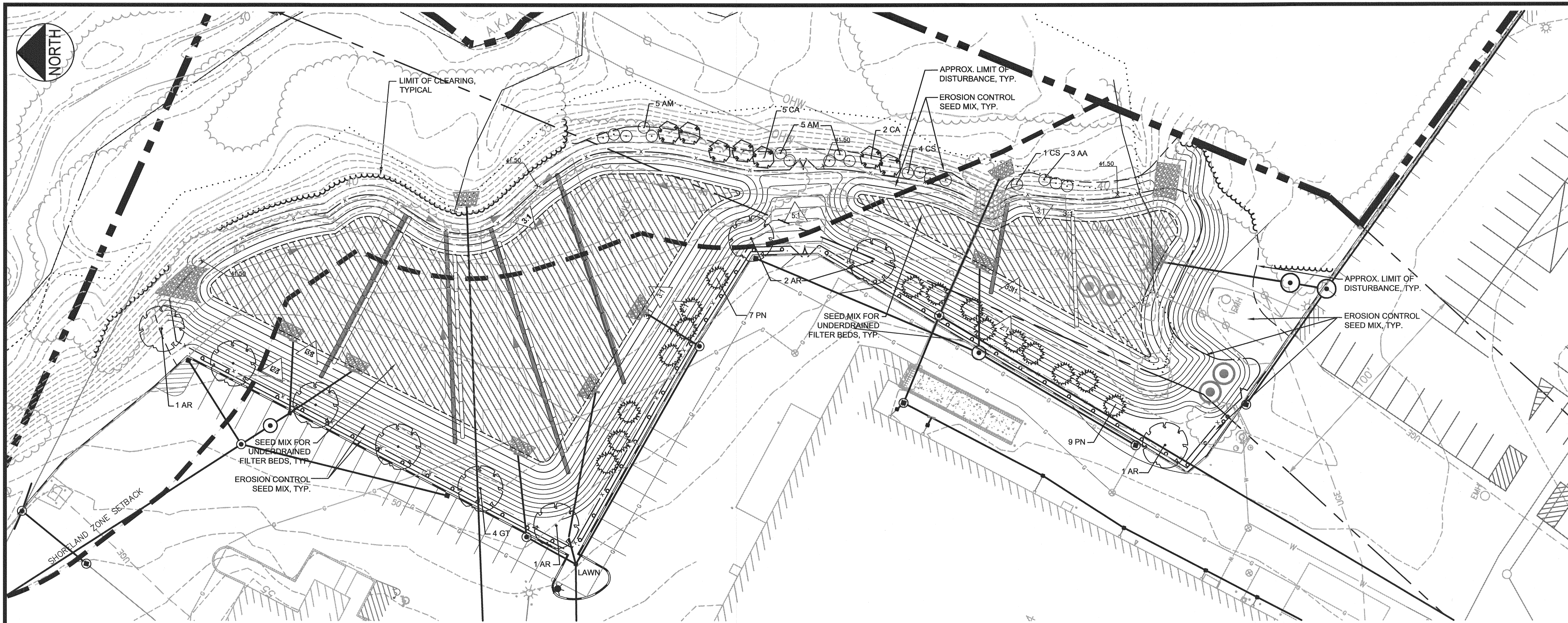
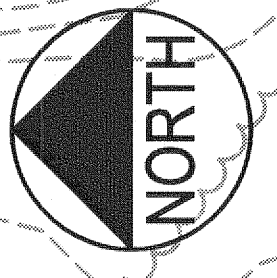
PROJECT LONG CREEK - RESTORATION PROJECT
CATCHMENT A1-05
220 MAINE MALL ROAD
SOUTH PORTLAND, MAINE 04106

SHEET TITLE
**RETAINING WALL PROFILE
FOR STORM TREAT AREA**

APPLICANT
CUMBERLAND COUNTY SOIL AND WATER
CONSERVATION DISTRICT
35 MAIN STREET-SUITE 3, WINDHAM, ME 04062

DH DeLUCA-HOFFMAN
ASSOCIATES, INC.
779 MAIN STREET, SUITE 8
SOUTH PORTLAND, ME 04106
207.775.1121
WWW.DELUCAHOFFMAN.COM

DRAWN: CMW DATE: NOV 2009
DESIGNED: RJW SCALE: N.T.S.
CHECKED: WGH JOB NO. 2889.01
FILE NAME: 2889-01-DET-WALL
SHEET 11.0



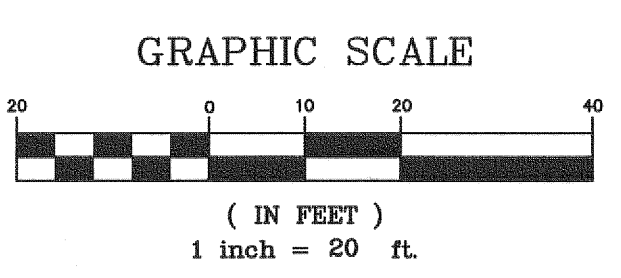
**LANDSCAPE PLAN FOR
STORMWATER QUALITY FILTERS - SUBCATCHMENT AREA 1 - 6**

SCALE: 1"=20'

SEE DETAIL SHEET 4.3 FOR
INSTALLATION DETAILS,
NOTES & SEEDING PLANS

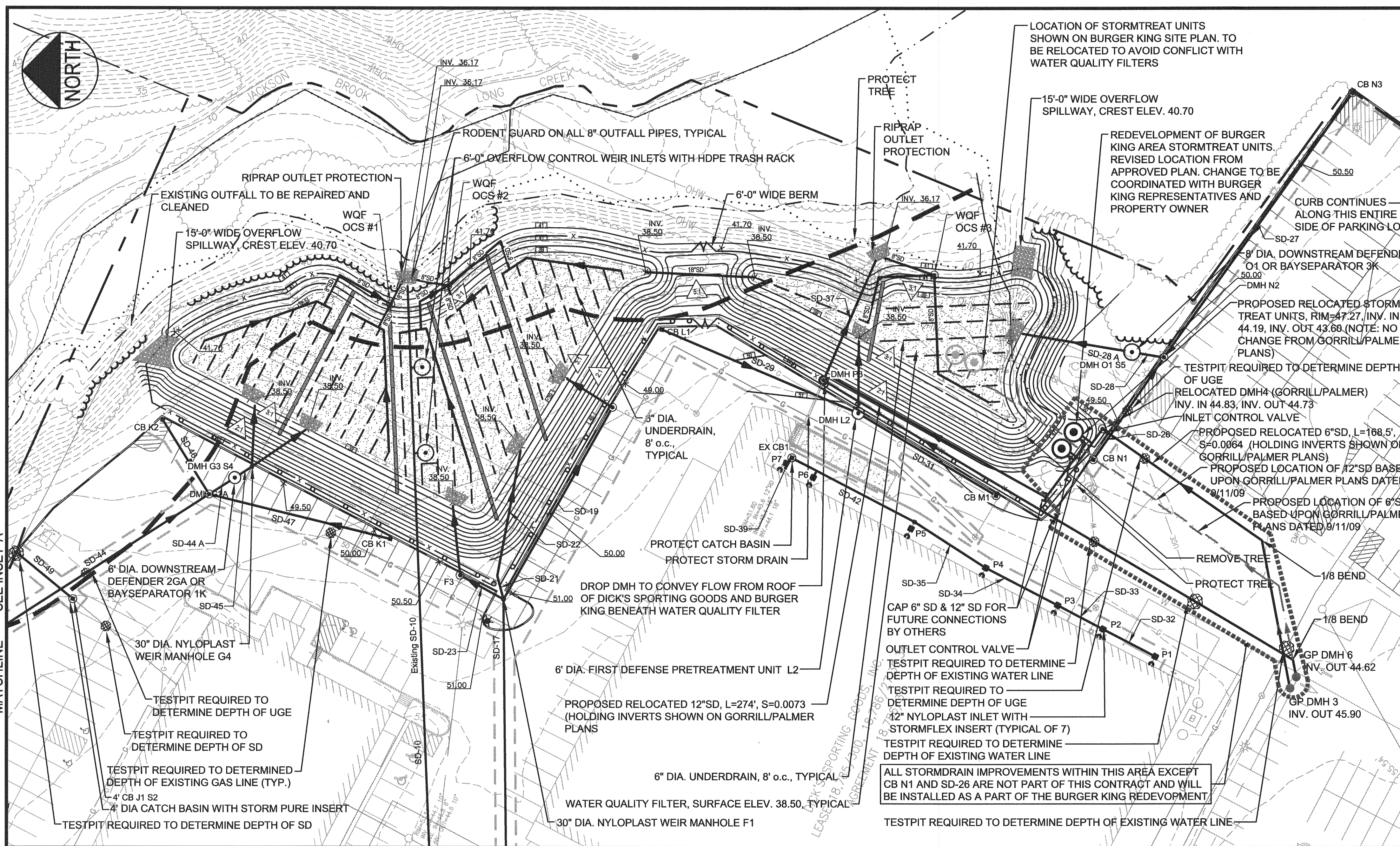
PLANT LIST						
KEY	QTY	BOTANICAL NAME COMMON NAME	SIZE	ROOT	SPACING	REMARKS
TREES						
AR	7	Acer rubrum 'Red Sunset' Red Sunset Red Maple	2.5-3" cal.	B&B		
GT	4	Gleditsia triacanthos inermis Thornless Honeylocust	2.5-3" cal.	B&B		
PN	21	Pinus nigra Austrian Pine	5-6' ht.	B&B		
SHRUBS, GRASSES & VINES						
AA	3	Amelanchier arbutifolia Red Chokeberry	24-30" ht.	3-5 gal.	5' o.c.	
AM	13	Aronia melanocarpa Black Chokeberry	24-30" ht.	3-5 gal.	5' o.c.	
CA	7	Cornus alternifolia Pagoda Dogwood	3-4' ht.	Cont./B&B		
CS	5	Cornus sericea Red Twig Dogwood	24-30" ht.	3-5 gal.	5' o.c.	
JC	3	Juniperus chinensis 'Hetzii Glauca' Blue Hetzii Juniper	18-24" spr.	Cont./B&B	5' o.c.	
JS	13	Juniperus chinensis 'Sargentii' Sargent's Juniper	18-24" spr.	Cont./B&B	4' o.c.	
PV	15	Panicum virgatum 'Dallas Blues' Dallas Blues Switchgrass	full	3 gal.	4' o.c.	
VM	5	Viburnum x burkwoodii 'Mohawk' Mohawk Viburnum	24-30" ht.	cont./B&B	5' o.c.	
HERBACEOUS (WATER QUALITY CHAMBERS)						
JE	120	Juncus effusus Softrush	4" pot or bare root			no mulch
SA	120	Scirpus atrovirens Bullrush	4" pot or bare root			no mulch
MISCELLANEOUS						
Mulch		Shredded Hardwood	3" depth			incl. tree rings
Grass Seed		See Seeding Plans				

PRELIMINARY - NOT FOR CONSTRUCTION



<table border="1"> <thead> <tr> <th>REV</th> <th>DATE</th> <th>DESCRIPTION</th> </tr> </thead> <tbody> <tr> <td>4</td> <td>12.13.09</td> <td>RELEASED FOR BIDS</td> </tr> <tr> <td>3</td> <td>12.08.09</td> <td>REVISED PER CMP COMMENTS</td> </tr> <tr> <td>2</td> <td>12.01.09</td> <td>REV. PER CITY COMMENTS DATED 11.24.09, RESUBMITTED TO CITY</td> </tr> <tr> <td>1</td> <td>11.12.09</td> <td>SUBMITTED TO CITY FOR SITE PLAN REVIEW</td> </tr> </tbody> </table>	REV	DATE	DESCRIPTION	4	12.13.09	RELEASED FOR BIDS	3	12.08.09	REVISED PER CMP COMMENTS	2	12.01.09	REV. PER CITY COMMENTS DATED 11.24.09, RESUBMITTED TO CITY	1	11.12.09	SUBMITTED TO CITY FOR SITE PLAN REVIEW		OWNERS GMG FAMILY LIMITED PARTNERSHIP 220 MAINE MALL ROAD SOUTH PORTLAND, MAINE 04106	PROJECT LONG CREEK - RESTORATION PROJECT CATCHMENT A1-05 220 MAINE MALL ROAD SOUTH PORTLAND, MAINE 04106	
	REV	DATE	DESCRIPTION																
	4	12.13.09	RELEASED FOR BIDS																
	3	12.08.09	REVISED PER CMP COMMENTS																
2	12.01.09	REV. PER CITY COMMENTS DATED 11.24.09, RESUBMITTED TO CITY																	
1	11.12.09	SUBMITTED TO CITY FOR SITE PLAN REVIEW																	
ADAP P. GINN 220 MAINE MALL ROAD SOUTH PORTLAND, MAINE 04106	SHEET TITLE LANDSCAPING PLAN - EAST	DRAWN: SEB DATE: NOV 2009 DESIGNED: SEB SCALE: 1" = 20' CHECKED: WGH JOB NO. 2889.01 FILE NAME: 2889-01-LANDSCAPE EAST SHEET 4.1																	
GINN REAL ESTATE, LLC 220 MAINE MALL ROAD SOUTH PORTLAND, MAINE 04106	APPLICANT CUMBERLAND COUNTY SOIL AND WATER CONSERVATION DISTRICT 35 MAIN STREET-SUITE 3, WINDHAM, ME 04062																		
SHELLEY E. BRUNELLE, RLA LIC. #LAR2593																			

G:\2889_01\dwg\CONTRACT\2889-01 LANDSCAPE EAST.dwg, LANDSCAPE EAST, 12/15/2009 10:48:11 AM, D.Davis



STORMWATER QUALITY FILTERS - SUBCATCHMENT AREA 1 - 6

SCALE: 1"=30'

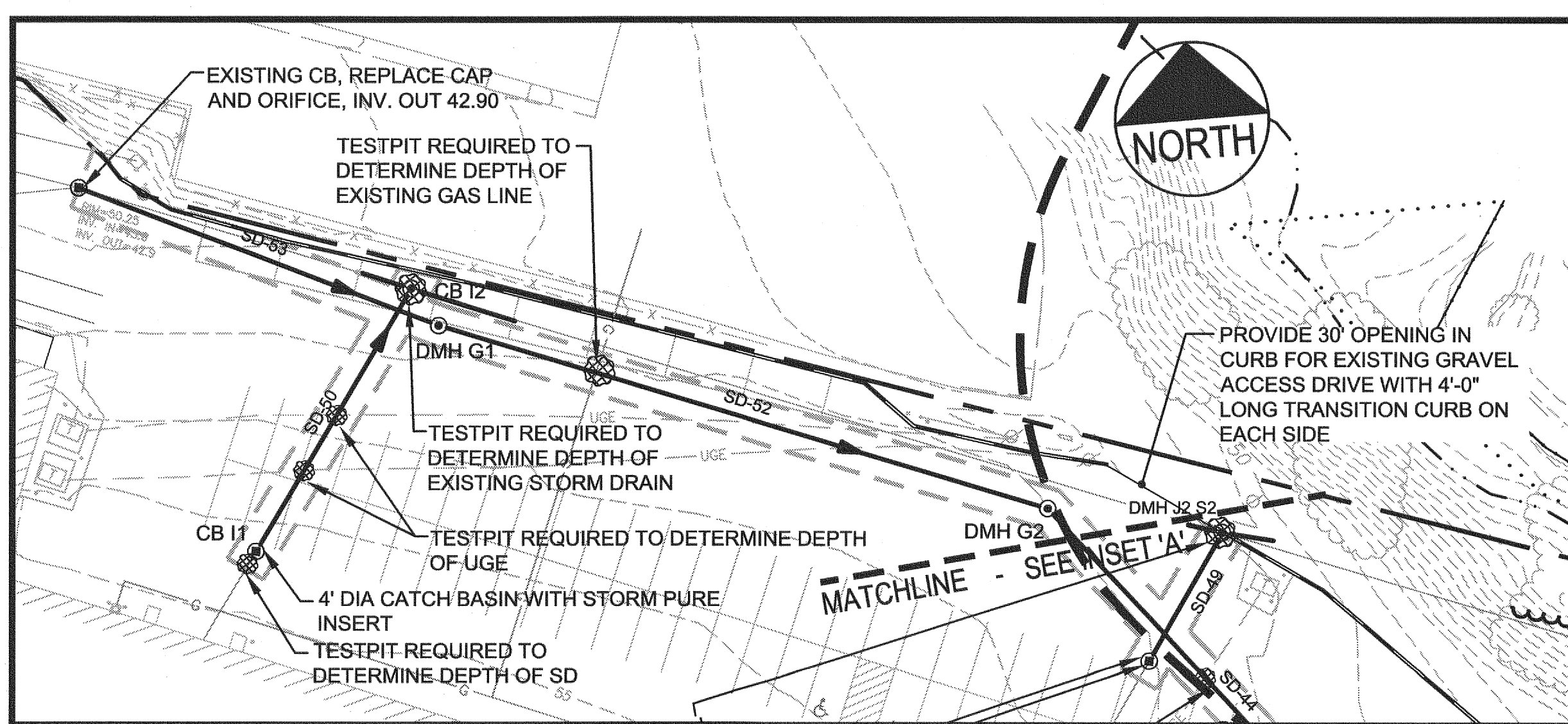
STORM DRAIN PIPE SCHEDULE				
ID	SIZE	LENGTH	SLOPE	
EX SD 1	24"	25'	0.0024	
EX SD 2	24"	11'	0.0091	
EX SD 3	24"	11'	0.0000	
EX SD 4	24"	7'	0.0000	
Pipe - (110)	15"	37'	0.0016	
Pipe - (123)	15"	262'	0.0076	
SD-10	30"	460'	0.0233	
SD-17	24"	320'	0.0049	
SD-19	12"	106'	0.0030	
SD-20	12"	25'	0.0134	
SD-21	12"	11'	0.0231	
SD-22	12"	64'	0.0402	
SD-23	12"	22'	0.0046	
SD-24	12"	34'	0.0163	
SD-26	12"	57'	0.0396	
SD-27	18"	156'	0.0015	
SD-28	18"	10'	0.0100	
SD-28 A	18"	51'	0.1020	
SD-29	12"	101'	0.0030	
SD-30	12"	34'	0.1376	

STORM DRAIN PIPE SCHEDULE				
ID	SIZE	LENGTH	SLOPE	
SD-31	12"	74'	0.0412	
SD-32	12"	28'	0.0031	
SD-33	12"	24'	0.0033	
SD-34	12"	39'	0.0031	
SD-35	12"	41'	0.0037	
SD-37	15"	64'	0.0102	
SD-42	12"	66'	0.0030	
SD-44	24"	125'	0.0015	
SD-44 A	24"	10'	0.0020	
SD-45	24"	6'	0.0016	
SD-46	12"	40'	0.0290	
SD-47	12"	89'	0.0264	
SD-48	18"	31'	0.1148	
SD-49	12"	32'	0.0031	
SD-50	12"	71'	0.0030	
SD-51	18"	32'	0.1103	
SD-52	24"	151'	0.0015	
SD-53	24"	90'	0.0014	

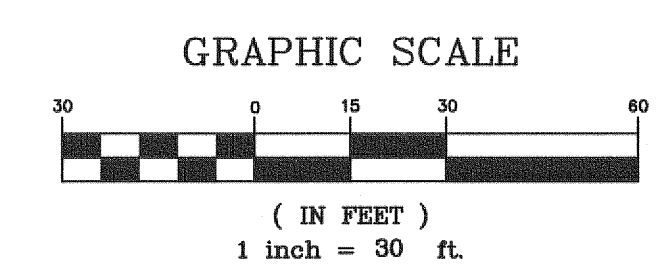
STORM DRAIN APPURTENANCE SCHEDULE				
ID	RIM	SIZE	INV. IN / SIZE / FROM	INV. OUT / SIZE / TO
4' CB J1 S2	52.00	4 ft Ø		37.51 / 12" / DMH J2 S2
CB I1	54.30	4 ft Ø		41.27 / 12" / CB I2
CB I2	51.30	4 ft Ø	41.06 / 12" / CB I1 41.06 / 24" / EX CB2	41.06 / 24" / EX CB3
CB K1	49.50	2 ft x 2 ft		44.50 / 12" / DMH G2A
CB K2	48.30	2 ft x 2 ft		43.30 / 12" / DMH G2A
CB L1	48.50	2 ft x 2 ft		43.50 / 12" / DMH L2
CB M1	51.25	4 ft Ø		46.25 / 12" / DMH L2
CB N1	49.50	4 ft Ø		46.53 / 12" / DMH N2
CB N3	49.50	4 ft Ø		44.50 / 18" / DMH N2
DMH G1	52.30	4 ft Ø	42.77 / 24" / EX CB	42.67 / 24" / DMH G2
DMH G2	52.00	4 ft Ø	42.44 / 24" / DMH G1	42.34 / 24" / DMH G2A
DMH G2A	49.79	4 ft Ø	42.15 / 24" / DMH G2 42.15 / 12" / CB K2 42.15 / 12" / CB K1	40.15 / 24" / DMH G3 S4
DMH G3 S4	49.48	6 ft Ø	40.13 / 24" / DMH G2A	42.13 / 24" / DMH G4
DMH G4	49.30	18 in Ø	42.12 / 24" / DMH G3 S4	42.02 / 18" / OUTFALL 1 42.02 / 18" / OUTFALL 2
DMH J2 S2	50.90	4 ft Ø	37.41 / 12" / 4' CB J1 S2 36.31 / 24" / EX CB5 36.41 / 24" / EX CB4	
DMH L2	51.10	6 ft Ø	43.20 / 12" / CB L1 43.20 / 12" / CB M1	43.20 / 12" / OUTFALL 8
DMH N2	50.30	4 ft Ø	44.27 / 12" / CB N1 44.27 / 18" / CB N3	42.27 / 18" / DMH O1 S5
DMH O1 S5	49.82	8 ft Ø	42.17 / 18" / DMH N2	43.67 / 18" / OUTFALL 9
DMH P8	50.50	4 ft Ø	44.01 / 15" / EX CB1 41.00 / 15" /	36.82 / 15" / OUTFALL 7
EX CB	51.00	4 ft Ø		42.90 / 24" / DMH G1

STORM DRAIN APPURTENANCE SCHEDULE				
ID	RIM	SIZE	INV. IN / SIZE / FROM	INV. OUT / SIZE / TO
EX CB1	53.12	4 ft Ø	46.96 / 12" / P5 46.96 / 4" / P7	44.07 / 15" / DMH P8
F1	51.50	18 in Ø	40.57 / 24" / DMH H7 S8 39.06 / 12" / F3	39.26 / 12" / F2 39.26 / 12" / 1/16 BEND
F2	49.20	4 ft Ø	38.94 / 12" / F1	38.84 / 12" / OUTFALL 6
F3	49.90	4 ft Ø		39.16 / 12" / F1 39.06 / 12" / OUTFALL 4
P1	52.00	12 in Ø		48.00 / 12" / P2
P2	52.00	12 in Ø	47.91 / 12" / P1	47.81 / 12" / P3
P3	52.00	12 in Ø	47.73 / 12" / P2	47.63 / 12" / P4
P4	52.00	12 in Ø	47.51 / 12" / P3	47.41 / 12" / P5
P5	52.00	12 in Ø	47.26 / 12" / P4	47.16 / 12" / EX CB1
P6	51.73	12 in Ø		47.35 / 4" / TEE 2
P7	51.76	12 in Ø		46.98 / 4" / EX CB1

STRUCTURE SCHEDULE NOTES:
 S2 - CATCH BASIN INSERT
 S4 - 6' Ø DOWNSTREAM DEFENDER
 S5 - 8' Ø DOWNSTREAM DEFENDER



INSET 'A'
SCALE: 1"=30'



<table border="1"> <thead> <tr> <th>REV</th> <th>DATE</th> <th>DESCRIPTION</th> </tr> </thead> <tbody> <tr><td>5</td><td>12.13.09</td><td>RELEASED FOR BID</td></tr> <tr><td>4</td><td>12.11.09</td><td>ADDED CLARIFICATION TO NOTES FOR WORK BY OTHERS, MINOR SCHEDULE REVISION</td></tr> <tr><td>3</td><td>12.01.09</td><td>REV. PER CITY COMMENTS DATED 11.24.09, RESUBMITTED TO CITY</td></tr> <tr><td>2</td><td>11.25.09</td><td>REVISED PER INTERNAL REVIEW</td></tr> <tr><td>1</td><td>11.12.09</td><td>SUBMITTED TO CITY FOR SITE PLAN REVIEW</td></tr> </tbody> </table>	REV	DATE	DESCRIPTION	5	12.13.09	RELEASED FOR BID	4	12.11.09	ADDED CLARIFICATION TO NOTES FOR WORK BY OTHERS, MINOR SCHEDULE REVISION	3	12.01.09	REV. PER CITY COMMENTS DATED 11.24.09, RESUBMITTED TO CITY	2	11.25.09	REVISED PER INTERNAL REVIEW	1	11.12.09	SUBMITTED TO CITY FOR SITE PLAN REVIEW		<p>OWNERS GMG FAMILY LIMITED PARTNERSHIP 220 MAINE MALL ROAD SOUTH PORTLAND, MAINE 04106</p> <p>ADAH P. GINN 220 MAINE MALL ROAD SOUTH PORTLAND, MAINE 04106</p> <p>GINN REAL ESTATE, LLC 220 MAINE MALL ROAD SOUTH PORTLAND, MAINE 04106</p>	<p>PROJECT LONG CREEK - RESTORATION PROJECT CATCHMENT A1-05 220 MAINE MALL ROAD SOUTH PORTLAND, MAINE 04106</p> <p>SHEET TITLE GRADING AND DRAINAGE PLAN - EAST</p> <p>APPLICANT CUMBERLAND COUNTY SOIL AND WATER CONSERVATION DISTRICT 35 MAIN STREET-SUITE 3, WINDHAM, ME 04062</p>	<p>DeLUCA-HOFFMAN ASSOCIATES, INC. 778 MAIN STREET, SUITE 8 SOUTH PORTLAND, ME 04106 207.775.1121 WWW.DELUCAHOFFMAN.COM</p> <p>DRAWN: LA DATE: NOV 2009 DESIGNED: RJW SCALE: 1"=30' CHECKED: WGH JOB NO. 2889-01 FILE NAME: 2889-01 SP EAST SHEET 3.1</p>
REV	DATE	DESCRIPTION																				
5	12.13.09	RELEASED FOR BID																				
4	12.11.09	ADDED CLARIFICATION TO NOTES FOR WORK BY OTHERS, MINOR SCHEDULE REVISION																				
3	12.01.09	REV. PER CITY COMMENTS DATED 11.24.09, RESUBMITTED TO CITY																				
2	11.25.09	REVISED PER INTERNAL REVIEW																				
1	11.12.09	SUBMITTED TO CITY FOR SITE PLAN REVIEW																				

G:\2889-01\dwg\CONTRACT\2889-01_SP_EAST.dwg, GRADING EAST, 12/15/2009 12:25:53 PM, cwhintermute