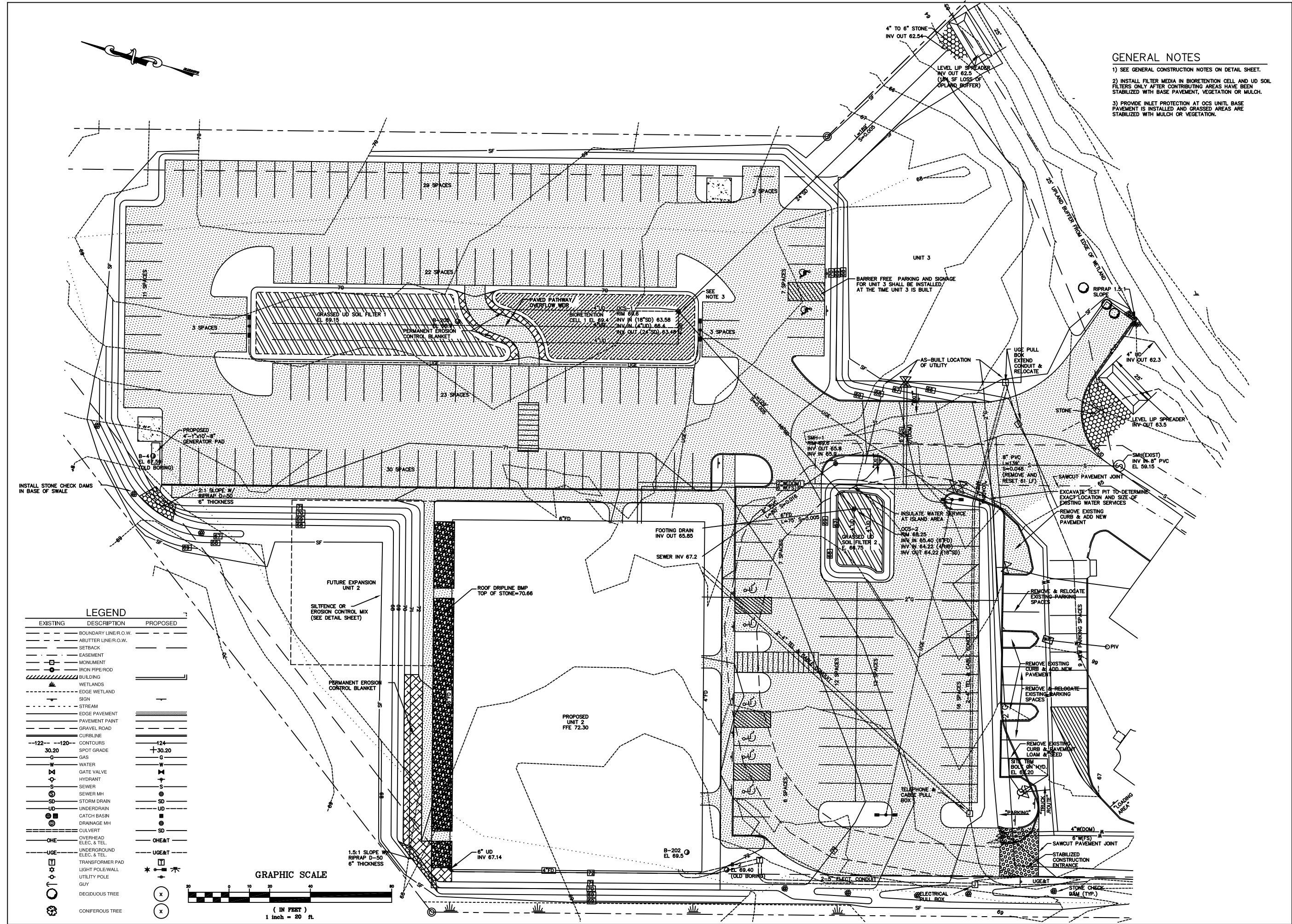


GENERAL NOTES

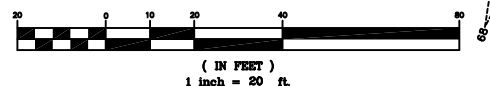
- 1) SEE GENERAL CONSTRUCTION NOTES ON DETAIL SHEET.
- 2) INSTALL FILTER MEDIA IN BIORETENTION CELL AND UD SOIL FILTERS ONLY AFTER CONTRIBUTING AREAS HAVE BEEN STABILIZED WITH BASE PAVEMENT, VEGETATION OR MULCH.
- 3) PROVIDE INLET PROTECTION AT OCS UNIT BASE PAVEMENT IS INSTALLED AND GRASSED AREAS ARE STABILIZED WITH MULCH OR VEGETATION.



LEGEND

EXISTING	DESCRIPTION	PROPOSED
---	BOUNDARY LINE/R.O.W.	---
---	ABUTTER LINE/R.O.W.	---
---	SETBACK	---
---	EASEMENT	---
---	MONUMENT	---
---	IRON PIPE/ROD	---
---	BUILDING	---
---	WETLANDS	---
---	EDGE WETLAND	---
---	SIGN	---
---	STREAM	---
---	EDGE PAVEMENT	---
---	PAVEMENT PAINT	---
---	GRAVEL ROAD	---
---	CURBLINE	---
---	CONTOURS	---
---	SPOT GRADE	---
---	GAS	---
---	WATER	---
---	GATE VALVE	---
---	HYDRANT	---
---	SEWER	---
---	SEWER MH	---
---	STORM DRAIN	---
---	UNDERDRAIN	---
---	CATCH BASIN	---
---	DRAINAGE MH	---
---	CULVERT	---
---	OVERHEAD ELEC. & TEL.	---
---	UNDERGROUND ELEC. & TEL.	---
---	TRANSFORMER PAD	---
---	LIGHT POLE/WALL	---
---	UTILITY POLE	---
---	GUY	---
---	DECIDUOUS TREE	---
---	CONIFEROUS TREE	---

GRAPHIC SCALE



ST. CLAIR ASSOCIATES
 LAND SURVEYING AND CIVIL ENGINEERING
 34 Forest Lane
 Portland, ME 04106
 Tel (207) 826-5558

AMENDED GRADING & UTILITY PLAN
 OF:
WINDWARD CIRCLE BUSINESS PARK
 280 GANNETT DRIVE
 SOUTH PORTLAND, MAINE
 FOR:
WINDWARD DEVELOPMENT LLC
 280 GANNETT DRIVE
 SOUTH PORTLAND, ME 04106

DATE	SCALE
09-01-11	1"=20'

SHEET 6 OF 12

REV:	BY:	DATE:	STATUS:
A	NJS	09-02-11	ISSUED FOR TEAM REVIEW
B	NJS	09-15-11	ISSUED FOR CITY STAFF REVIEW
C	NJS	09-30-11	UPDATE PER STAFF COMMENTS, ISSUE FOR REVIEW
D	NJS	10-04-11	REVISE PER REVIEW COMMENTS
E	DCS	09-10-12	ADDED AS-BUILT UTILITY TO UNIT 3

PROJECT NO.	11024
DESIGN	NJS
CHKD	NJS
DRAWN	DCS

THIS PLAN SHALL NOT BE MODIFIED WITHOUT PERMISSION FROM ST. CLAIR ASSOCIATES. ANY ALTERATIONS, AUTHORIZED OR OTHERWISE, SHALL BE AT THE USER'S SOLE RISK AND WITHOUT LIABILITY TO ST. CLAIR ASSOCIATES.

11024GUT